

3.8 - Public Services

3.8.1 - Summary

This section describes the existing public services currently provided to the proposed incorporation area and potential effects from project implementation on the site and its surrounding area.

3.8.2 - Environmental Setting

Fire and Emergency Medical Services

Fire protection—including hazmat, advanced life support, and emergency medical services—is provided to the proposed incorporation area by the Sacramento Metropolitan Fire District (Sac Metro Fire), an independent, non-enterprise special district. Sac Metro Fire is governed by a nine-member board elected by geographical division.

Sac Metro Fire was formed in 2000 by consolidating American River Fire Protection District and the Sacramento County Fire Protection District. These two districts were formed by consolidating 16 former fire districts in Sacramento County, including the Citrus Heights, Rancho Cordova, Florin, North Highlands, Fair Oaks, Arden, Carmichael, Rio Linda/Elverta, and Sloughouse fire protection districts.

Sac Metro Fire operates 42 fire stations, has over 700 uniformed personnel, and serves a population of approximately 600,000 in a 417-square-mile area. Sac Metro Fire responds to emergencies in rural, suburban, and urban settings. They are authorized to fight wildland and structural fires; perform crash fire rescue, technical rescue, air evacuation, and swift water rescue; perform hazardous material mitigation; and provide emergency medical services. Sac Metro Fire maintains mutual aid and automatic aid agreements with neighboring fire districts, cities, and community services districts. Sac Metro Fire analyzed the potential for closing one or more stations for a period of time (also known as a “brownout”) because of a fiscal crisis, as contained in the Deployment Reduction Analysis for the Sacramento Metropolitan Fire District, released May 2009. The analysis also includes potential impacts that are due to station closure. The results of the analysis show those stations that have been determined to be the best candidates for reduction, if brownouts or closures were necessary.

Table 3.8-1 lists the five fire stations within the proposed incorporation area (Exhibit 3.8-1). The fire stations are typically able to cover their First Alarm Response Zones within 5 to 7 minutes after receiving a call from dispatch.

Table 3.8-1: Fire Stations within Proposed Incorporation Boundary

Fire Station	Address	Apparatus
Station 101	3000 Fulton Avenue	1 engine; 1 ambulance
Station 103	3824 Watt Avenue	1 engine

Table 3.8-1 (cont.): Fire Stations within Proposed Incorporation Boundary

Fire Station	Address	Apparatus
Station 105	2691 Northrop Avenue	1 engine
Station 106	2200 Park Towne Circle	1 engine, 1 truck, 1 boat, and Battalion Chief – Battalion 7
Station 110	1432 Eastern Avenue	1 engine; 1 ambulance
Source: http://www.sacmetrofire.ca.gov/ , 2009.		

The Insurance Services Office (ISO) assigns fire insurance protection classifications to fire districts. ISO ratings influence fire insurance premiums. The main components of each rating classification are water supply, communications, staffing level, training, and equipment level. ISO ratings range from 1 to 10, with 1 being the best rating. Sac Metro Fire maintains an ISO rating of 3 in areas with fire hydrants such as the proposed incorporation area.

Public Schools

The proposed incorporation area lies with the boundaries of the San Juan Unified School District (SJUSD). The SJUSD serves more than 40,000 students in 72 schools, and it operates several special education centers, preschools, and adult education programs (www.sanjuan.edu). Of the 72 schools, eleven elementary schools, two middle schools, three high schools, one special education high school, and two special education school programs are located in the proposed incorporation area.

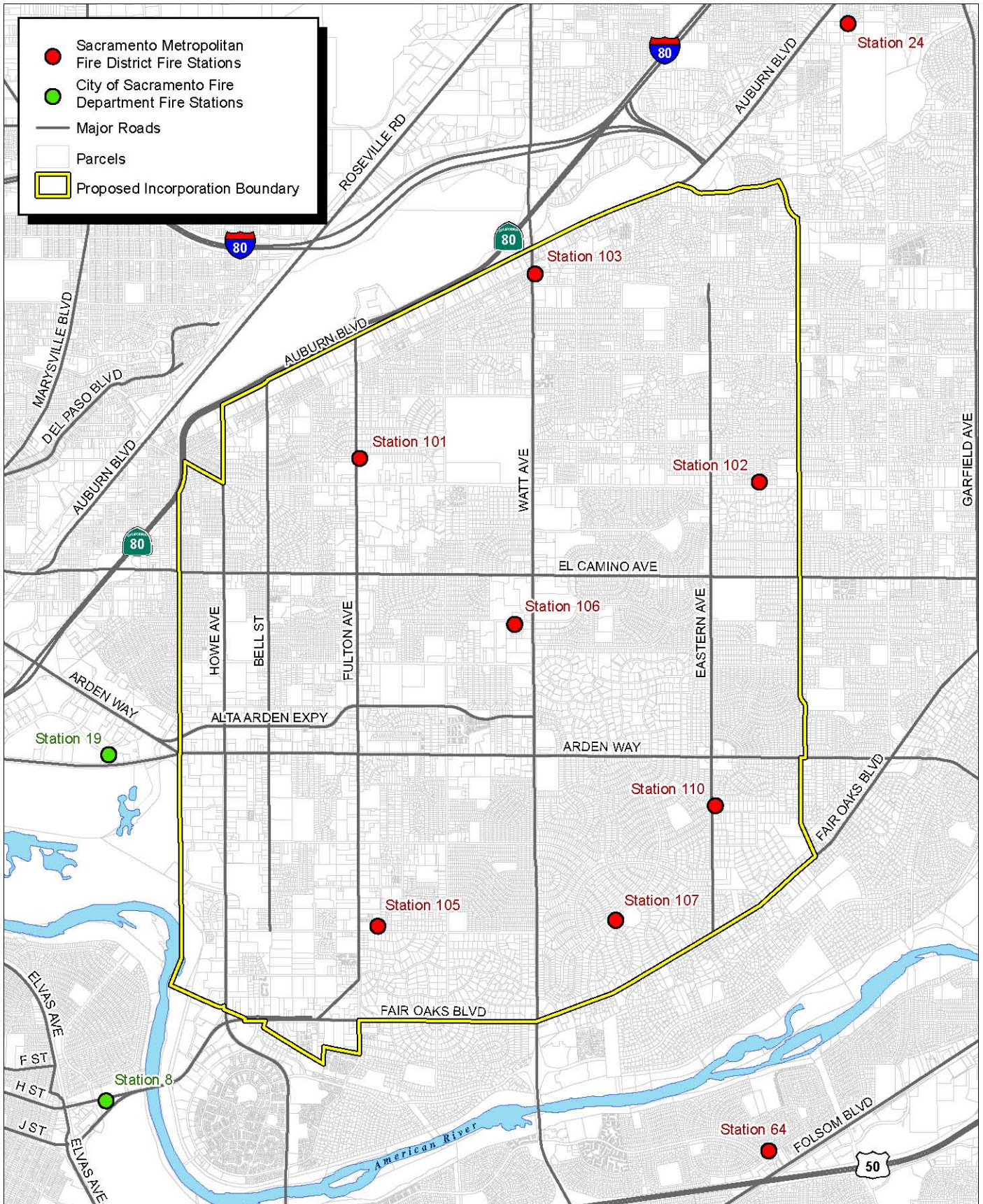
Parks and Recreation

The proposed incorporation area is served by four recreation and park districts (RPDs). The park agencies are shown in Exhibit 3.8-2.

Mission Oaks Recreation and Park District

The Mission Oaks RPD is a dependent district, and includes approximately 102.7 acres of parks over an 8.5-square-mile area. The Mission Oaks RPD maintains 15 parks, four of which are on school sites (Cowan, Del Paso Manor, Greer, and Sierra Oaks) of the SJUSD. In addition, the Mission Oaks RPD maintains the County-owned Hazelwood Greens stormwater detention basin.

The Mission Oaks RPD operates two community centers, one in Gibbons Park and one in Swanston Park. The Mission Oaks RPD provides a number of recreational programs and classes. In addition, some of the services include a teen drop-in program, a hot lunch program, and a senior lunch program.



Source: Sacramento County GIS (2008, 2009), SACOG (2009), MBA (2009).



Michael Brandman Associates

32330001 • 12/2009 | 3.8-1_Fire_Stations.mxd

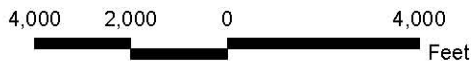
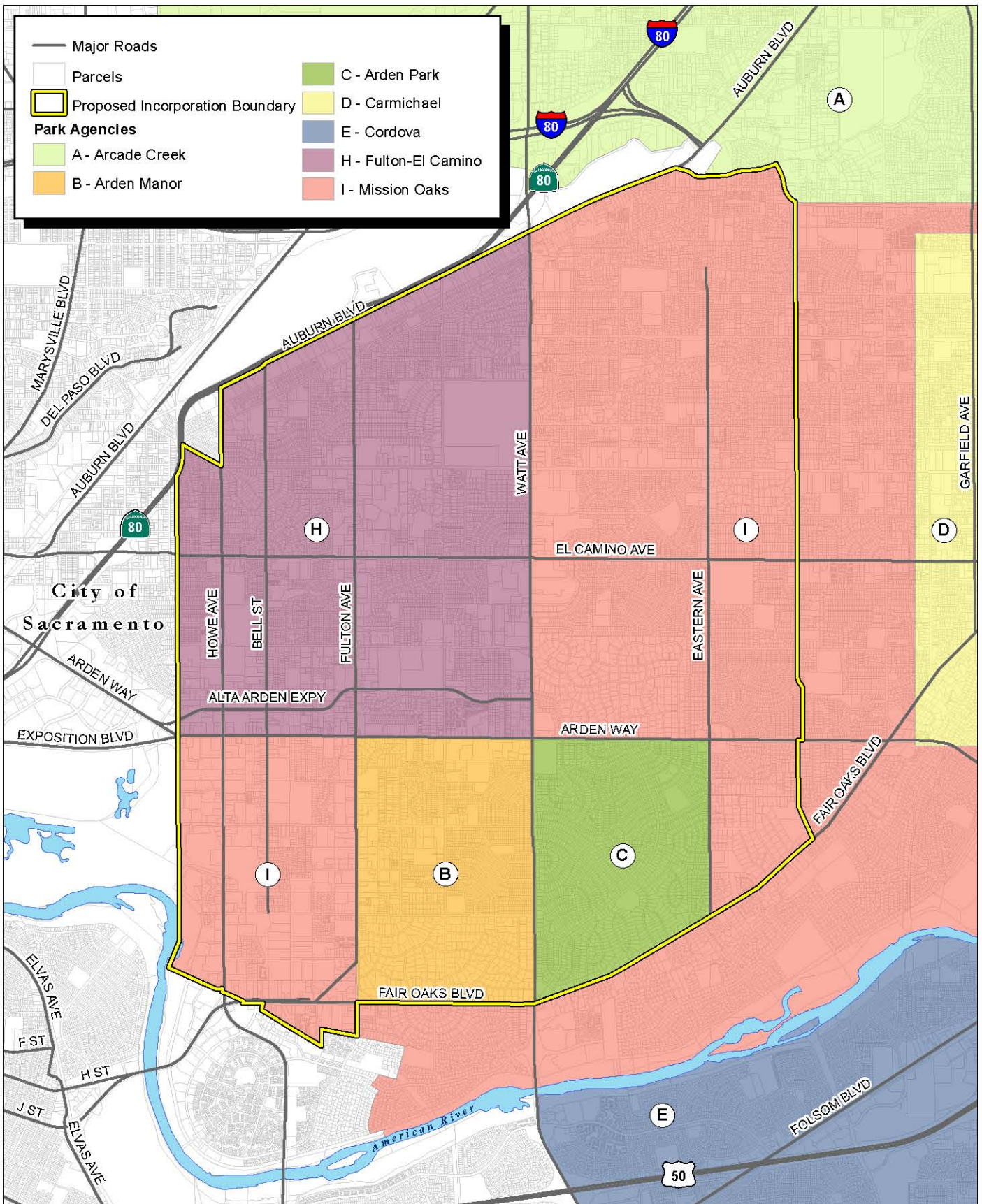


Exhibit 3.8-1 Fire Station Locations



Source: Sacramento County GIS (2009), SACOG (2009), MBA (2009), Sacramento LaFCO (2009).



Exhibit 3.8-2 Park Agencies

As seen in Exhibit 3.8-2, the Mission Oaks RPD lies along the eastern and southern portions of the proposed incorporation area. However, the Mission Oaks RPD extends outside of the proposed incorporation area. Specifically, the area between Mission Avenue and Walnut Avenue is within the Mission Oaks RPD but outside the proposed incorporation area. Similarly, the area south of Fair Oaks is outside the proposed incorporation area.

Table 3.8-2 identifies each Mission Oaks RPD park and its associated amenities. It is important to note that some of the facilities would be outside the proposed incorporation area.

Table 3.8-2: Mission Oaks Recreation and Park District Park Amenities

Park	BBQ Area	Basketball	Bathroom	Football	Playground	Soccer	Tennis	Volleyball
Ashton *	X	X	X	X	X	X	X	X
Cowan		X			X			
Del Paso Manor		X			X	X	X	X
Eastern Oak					X	X		
Gibbons *	X	X	X		X			X
Greer/Winthers		X			X	X		
Maddux *					X			X
Mission North *	X	X			X			X
Oak Meadow *					X			
Orville Wright					X			X
Sheffield *					X		X	
Sierra Oaks *	X	X			X	X		
Swanston		X	X		X		X	X
Valley Oak		X			X	X		
Windemere		X			X			
Notes: * Outside proposed incorporation area.								

Fulton El Camino Recreation and Park District

The Fulton El Camino RPD is an independent special district that covers approximately 5.25 square miles with seven parks and a nature area. The Fulton El Camino RPD is bordered by Watt Avenue on the east, Arden Way to the south and southwest, and Interstate 80 to the north and northwest. The far western portion of this RPD, where one of the seven parks is located, is within Sacramento’s city limits. The Fulton El Camino RPD provides a variety of recreational programs and activities for

youths, adults, and teens. The Fulton El Camino RPD also includes the Richard T. Conzelmann Community Center at Howe Park. The center includes two conference rooms capable of seating 8 to 40 people and an auditorium that will seat up to 100. The facility is available to rent for a variety of gatherings. The Community Center at Cottage Park houses many of the Fulton El Camino RPD’s programs for children. The Fulton El Camino RPD parks and their amenities are provided in Table 3.8-3.

Table 3.8-3: Fulton El Camino Recreation and Park District Park Amenities

Park	BBQ Area	Basketball	Bathroom	Creek Access	Parking	Playground	Soccer	Softball	Tennis
Babcock [*]		X			X	X		X	
Bellview		X			X	X			
Bohemian	X			X		X			X
Cottage ^b	X	X	X	X	X	X		X	
Creekside		X				X		X	
Howe ^d	X		X	X	X	X	X		X
Santa Anita	X			X					
Seely ^e	X	X	X		X	X			
Notes: [*] Outside proposed incorporation area.									

Like Mission Oaks RPD, the proposed incorporation area would only partially include Fulton El Camino RPD. The portion of the Fulton El Camino RPD west of Ethan Way, which includes Babcock Park, would be outside the proposed incorporation area.

Arden Manor Recreation and Parks District

Arden Manor RPD is an independent special district with a five-member governing board elected to four-year staggered terms. The Arden Manor RPD is bounded by Fulton Road on the west, Arden Way on the north, Watt Avenue to the east, and Fair Oaks Boulevard to the south. The Arden Manor RPD lies completely within the boundaries of the proposed incorporation area. The Arden Manor RPD covers approximately 1.5 square miles and includes four parks totaling 21 acres. Table 3.8-4 identifies each Arden Park RPD park its associated amenities. The Arden Manor RPD also offers a variety of programs for residents of all ages at the Deterding Community Center.

Table 3.8-4: Arden Manor Recreation and Park District Park Amenities

Park	BBQ Area/ Picnic	Basketball	Baseball/ Softball	Playground	Multi- purpose Fields	Restroom	Soccer	Tennis	Other
Crabtree	X		X	X	X				Senior Fitness Walkway
Deterding	X			X	X				Aquatic Complex Outdoor Stage
Jonas Larkspur	X		X	X	X		X	X	Nature area
Winterstein	X		X		X				

Arden Park Recreation and Parks District

The Arden Park RPD is an independent special district with a five-member governing board elected to four-year staggered terms. The Arden Park RPD is bounded by Watt Avenue on the west, Arden Way on the north, Eastern Avenue to the east, and Fair Oaks Boulevard to the south. The Arden Park RPD lies completely within the boundaries of the proposed city. The area covers approximately 1.5 square miles and includes two parks totaling 13 acres. Table 3.8-5 identifies each Arden Park RPD park and its associated amenities. The Arden Park RPD also offers classes and programs for teens, adults, and seniors.

Table 3.8-5: Arden Park Recreation and Park District Park Amenities

Park	BBQ Area/ Picnic	Basketball	Baseball/ Softball	Playground	Multi- purpose fields	Restroom	Soccer	Tennis	Other
Arden	X	X	X	X		X		X	Community Center Swimming Pool Horseshoe Pit Parking
Cresta	X	X		X		X	X	X	

American River Parkway

The American River Parkway is a 23-mile corridor along the American River between the Sacramento River and Lake Natoma. The proposed incorporation area would lie alongside an approximate 0.75-mile stretch of the American River Parkway’s northern boundary, just east of the Sacramento city limits. The adjacent portion of the American River Parkway is managed by the Sacramento County Regional Parks and Recreation Department.

Library Services

The Sacramento Public Library Authority (Library) is a joint powers authority serving Sacramento County and the cities of Sacramento, Citrus Heights, Elk Grove, Galt, Isleton, and Rancho Cordova.

The Library operates 27 branch libraries, including a Central Library in downtown Sacramento. The Library has over 300 staff, a collection of 2 million volumes, and a budget of \$36 million. More than 500,000 people have Sacramento Public Library cards and more than 6 million items are circulated each year (Sacramento Public Library Authority 2009). The proposed incorporation area includes two branch libraries: the Arcade Library on Marconi Avenue and the Arden-Dimick Library on Watt Avenue.

The Arcade Library was opened in April 1941 and has moved several times before occupying its current location at 2443 Marconi Avenue. The Arcade Library serves a population of approximately 50,000 people and contains a collection of approximately 80,000 items. The Arcade Library also includes a meeting room and provides family and adult programs (Sacramento Public Library Authority 2009).

The Arden-Dimick Library was established in 1948 in the Arden School, relocated to the Arden Town Shopping Center in 1951 and then to its current location at Watt Avenue and Northrop Avenue in 1971. The Arden-Dimick Library holds over 75,000 items (Sacramento Public Library Authority 2009).

Animal Control

The Sacramento County Animal Care and Regulation Department, a part of the Sacramento County Municipal Services Agency, provides animal control services to the proposed incorporation area. Animal Control Services are required by the County Code, Title 8, and state law. Funding is provided through licenses, permits, charges, and other general revenue of the County's Unincorporated Area Services Fund. The main facility is located at 3839 Brandshaw Road outside of the proposed incorporation boundary.

Law Enforcement

The Sacramento County Sheriff (Sheriff) provides local police services to the unincorporated areas of the County, including the proposed incorporation area. The Sheriff also provides police services to the City of Rancho Cordova on a contractual basis. Police services include response to calls and trouble spots, investigations, surveillance, and routine patrolling. During fiscal year 2009-2010, the Sheriff maintained 1,248 sworn officers and 643 non-sworn personnel. However, as a result of the recent economic downturn, the Sacramento County Board of Supervisors approved a County budget in October 2009 that reduced the Sheriff's budget by nearly \$1 million. The budget cut is anticipated to be achieved by not filling positions vacated through normal attrition.

The Sheriff has divided the County into divisions. The proposed incorporation area lies entirely within the North Central Division, which operates out of the Marconi Station at 2500 Marconi Avenue. Each division is subdivided into patrol zones. Exhibit 3.8-3 shows the patrol zones for the North Central Division. The proposed incorporation area includes zones 41 through 44. Each division also maintains a Community Service Center, which, for the North Central Division, is

located in Carmichael. One of the purposes of the Community Service Center is to provide community oriented policing services. The Community Service Center is staffed with volunteers and paid employees whose duties are neighborhood-based.

The California Highway Patrol (CHP) provides traffic enforcement services to the unincorporated area of Sacramento County through a mutual aid agreement. CHP is a statewide agency with over 10,000 sworn and non-sworn officers. The proposed incorporation area lies in the Valley Division. The Valley Division includes 17 area offices, four resident posts, one commercial inspection facility, one transportation management center, and four communications/dispatch centers. The division includes 785 uniformed officers and 250 non-uniformed personnel. The nearest area office, the North Sacramento Office, located at 5109 Tyler Street, is approximately 1 mile north of the northeastern corner of the proposed incorporation area.

Water

The proposed incorporation area is served by five water purveyors, including the Sacramento County Water Agency Zone 41, two special districts, and two private water companies. In addition, unserved portions exist within the proposed incorporation area. These unserved portions utilize well water. The special districts include Sacramento Suburban Water District and Del Paso Manor Water District. The private purveyors are Golden States Water Company and Cal American Water Company. The areas covered by each purveyor are shown in Exhibit 3.8-4. Additional information on water resources, including the supply mix, can be found in Section 3.4, Hydrology and Water Quality.

Sacramento County Water Agency (SCWA) Zone 41

A portion of the proposed incorporation area, as shown in Exhibit 3.8-4, is served by SCWA Zone 41, a retail and wholesale water purveyor. The SCWA supplies water to approximately 3,000 customers in the proposed incorporation area. SCWA Zone 41 funds the operation and maintenance of a potable water system through connection permit fees, construction water permits, and grants. The services include water production, treatment, storage and distribution facilities such as wells, pipelines, pumping plants, and meters.

Sacramento Suburban Water District

The SSWD was formed in 2002 with the consolidation of the Northridge Water District and the Arcade Water District. As shown in Exhibit 3.8-4, a majority of the proposed incorporation area is served by Sacramento Suburban Water District (SSWD). SSWD provides water from 88 active groundwater wells with a capacity of 98,611 gallons per minute. SSWD also contracts with the City of Sacramento and the Placer County Water Agency for an additional 55,000 acre-feet of surface water per year. SSWD covers a total of 36 square miles, serving a population of approximately 158,000 with 44,090 connections. The distribution system includes 711 miles of water mains with a storage capacity of 16.7 million gallons.

Del Paso Manor Water District

The Del Paso Manor Water District covers 1.2 square miles and is approximately bounded by Cottage Way on the south, Marconi Avenue on the north, Watt Avenue on the west and Eastern Avenue on the east. The Del Paso Manor Water District is surrounded on all four sides by the SSWD. It serves a population of 4,458 from eight wells through 1,800 connections. The Del Paso Manor Water District has a contract for up to 2,460-acre-feet of surface water from the City of Sacramento if necessary.

Golden States Water Company

The Golden States Water Company is an investor owned utility that provides potable water services. The Golden States Water Company was formerly known as the Arden-Cordova Water Service and is now a subsidiary of American States Water Company. American States serves approximately 255,000 customers in 10 counties in California as well as to 13,000 customers in Fountain Hills and Scottsdale, Arizona.

Golden States has approximately 15,000 connections in Arden Arcade and Rancho Cordova. Groundwater is distributed from 22 wells in Rancho Cordova and 8 wells in the Arden area. Golden States Water Company serves the portion of the incorporation area bounded by Northrop Avenue on the south, Morse Avenue on the west, Cottage Way on the north and Watt Avenue on the east.

Cal American Water Company

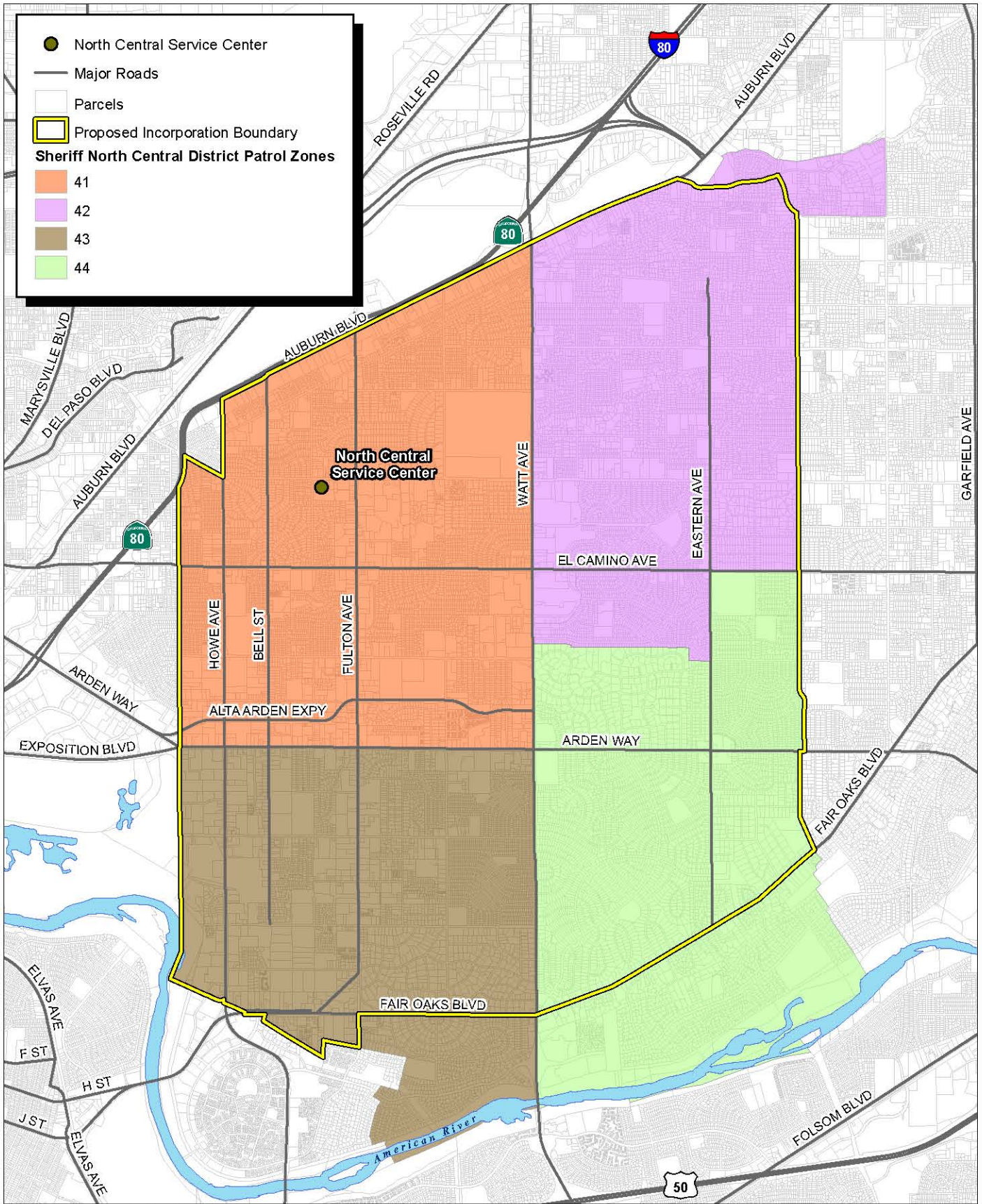
California American Water Company (Cal American Water) is a private water purveyor and a subsidiary of American Water that operates in 32 states and Ontario, Canada. In the Sacramento area, it serves many communities including Isleton, North Highlands, Arden, Antelope, Security Park, Lincoln Oaks, Parkway, and Walnut Grove.

Wastewater Services

Sewer collection services in unincorporated Sacramento County are provided by the Sacramento Area Sewer District (SASD), which builds and maintains trunk lines, and the Sacramento Regional County Sanitation District (SRCSD), which builds and operates the interceptor lines and regional wastewater treatment plant. The SRCSD and SASD are separate agencies, formed under the Health and Safety Code. The two districts are funded through revenues collected from hookup fees or service charges.

The SRCSD was formed in 1973 to eliminate all wastewater flows to the American River, to minimize raw sewage overflows to the Sacramento River, and to replace 17 separate wastewater treatment agencies with one consolidated district with a centralized treatment facility.

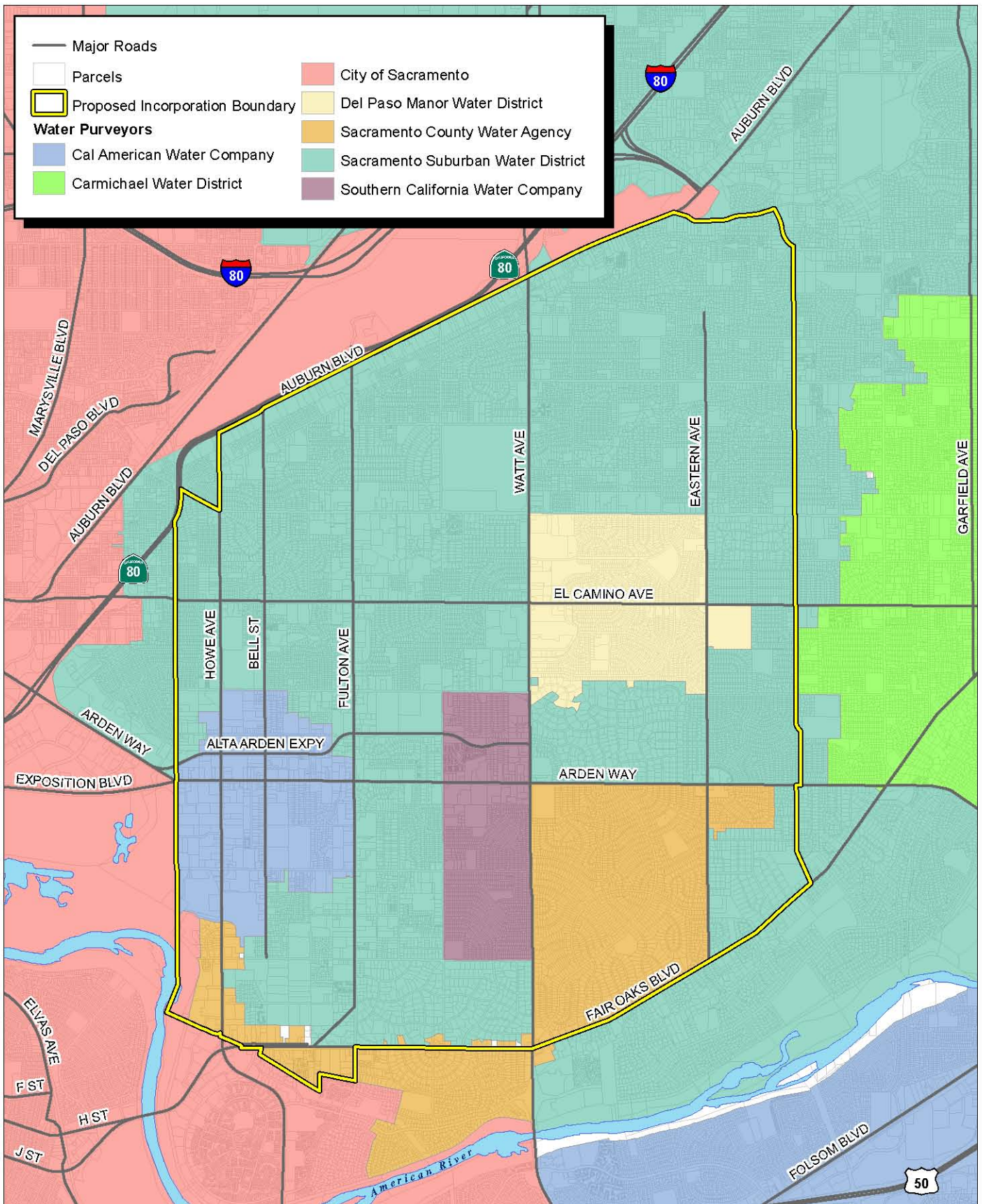
SRCSD treats wastewater for the entire urbanized area in Sacramento County, excepting the cities of Galt and Isleton. The SRCSD treats wastewater from land uses including residential, commercial, and industrial customers, at the Sacramento Regional Wastewater Treatment Plant (SRWTP) located near the town of Freeport.



Source: Sacramento County GIS (2009), SACOG (2009), MBA (2009).



Exhibit 3.8-3 Sheriff Patrol Zones



Source: Sacramento County GIS (2009), SACOG (2009), MBA (2009).



Exhibit 3.8-4 Water Purveyors

The main SASD collection system includes over 2,800 miles of sewer pipelines that deliver sewage to the interceptor system operated and maintained by SRCSD. The SRCSD interceptors are large systems of pipes, up to 10 feet in diameter.

Sewage is routed to the SRWTP by the collection systems owned by SRCSD and the cities of Sacramento and Folsom. The SRWTP is permitted to treat an average dry weather flow of 181 million gallons per day (mgd) and a daily peak wet weather flow of 392 mgd. The majority of treated effluent is dechlorinated and discharged into the Sacramento River. After secondary treatment and disinfection, a portion of the effluent is further treated in SRCSD's Water Reclamation Facility and then used for landscape irrigation in Elk Grove.

Stormwater Drainage

The proposed incorporation area lies within the Lower American River watershed. Most of the Arden Arcade area drains into Chicken Ranch Slough and Strong Ranch Slough, which flow to a storm drainage pump station at the eastern side of Cal Expo. Both of these sloughs experience flooding during high-intensity storm events. The Lower American watershed includes the American River, Dry Creek, and the Sacramento River, an area of approximately 300 square miles. During major storm events, creeks and streams empty high flows into the Sacramento and American River systems. The American River flood control system consists of Folsom Dam at Nimbus, an auxiliary dam at Mormon Island, eight earth-filled dikes, and 4 miles of levees on the north bank of the American River from Howe Avenue to Arden Way. The American River flood control system was designed to hold a maximum flow of 115,000 cubic feet per second.

Exhibit 3.8-5 shows the flood agencies control in north Sacramento County. As seen in the exhibit, the southwestern portion of the proposed incorporation area lies within the American River Flood Control District boundaries. The American River Flood Control District is charged with operating and maintaining the levees along the American River, a small portion of the Sacramento River, Arcade Creek, Dry Creek, Magpie Creek, and Steelhead Creek. The American River Flood Control District monitors the levees during floods for boils, seepage, or other signs of distress and initiates a flood fight if necessary. Maintaining levees involves regular patrols and trimming vegetation that would impair visibility for signs of levee distress. During the summer, crews operate a rodent abatement program and repair areas damaged by rodents or by erosion during the previous winter. Maintenance of the levees also includes maintaining levee access, levee crowns, and stockpiling emergency flood materials. The American River Flood Control District along with the City of Sacramento, Sacramento County, Sutter County, and Reclamation District 1000 are members of a joint powers authority—the Sacramento Area Flood Control Agency (SAFCA). The SAFCA acts as the planning and financing agency for regional flood control projects.

The Sacramento County Water Agency (SCWA) provides flood control and storm drainage services to the majority of the incorporation area. Services include maintenance and operation of the channel

system, maintenance and operation of the drainage pipe systems, investigation of drainage system design problems, and formulation and construction of projects to alleviate the problems.

In addition, SCWA develops and implements programs to reduce the discharge of pollutants from urban runoff to local receiving waters, and develops long-range drainage master plans.

When the SCWA was formed, zones were delineated within the agency's boundary in order to finance drainage facilities. The proposed incorporation area lies within Zone 11B, Zone 12, and Zone 13. Zone 11B was created to provide funds for the construction of major drainage facilities. The Sacramento County Stormwater Utility (SWU), Zone 12, provides drainage, operation, and maintenance of storm drainage facilities; the construction of remedial storm drainage improvement projects; the preparation of storm drainage master plans; and the implementation of stormwater quality programs. The SWU is funded by bi-monthly service fees. Zone 13 was created in 1987 to fund comprehensive, long-range planning and engineering studies of flood control, water resources development, water supply management, and water conservation. Zone 13 covers all of Sacramento County except the cities of Sacramento, Folsom, Isleton, and Galt.

Stormwater runoff in Sacramento County is regulated by the Regional Water Quality Control Board (RWQCB). Sacramento County currently holds a National Discharge Elimination System (NPDES) permit issued by the Regional Water Quality Control Board and is a co-permittee with the cities of Sacramento, Folsom, Galt, and Citrus Heights. To comply with its NPDES permit, the County of Sacramento is implementing management and monitoring procedures to improve stormwater quality.

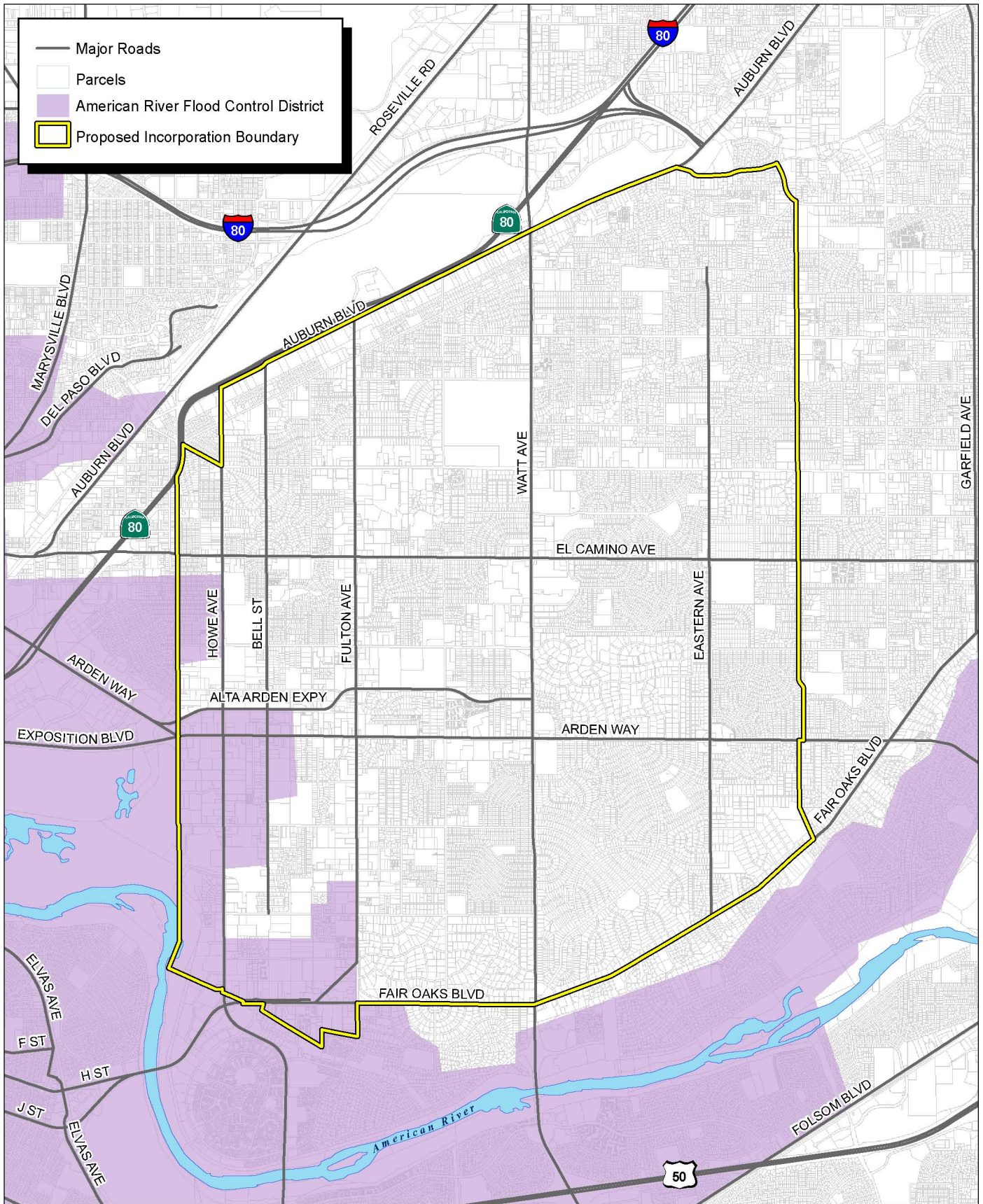
Within the past 10 years, the County has completed several projects to improve drainage in the Arden Arcade area. As recently as 2005, the County increased the diameter of the mainline drainage pipes in the area.

Solid Waste

The Sacramento County Department of Waste Management and Recycling (DWMR) provides solid waste services to the unincorporated portion of Sacramento County. The DWMR provides garbage, greenwaste, and recycling collection services; garbage disposal; recycling facilities; and recycling programs.

DWMR provides waste management collection services for 155,000 residences in the unincorporated areas of the County. Residents are provided with mixed recycling and green waste containers for curbside collection.

Sacramento County owns and operates the Kiefer Landfill, located at Kiefer Boulevard and Grant Line Road. The Kiefer Landfill consists of 1,084 acres with a permitted disposal area of 660 acres. Kiefer Landfill is the primary solid waste disposal facility in the County. It is classified as a Class III facility and is permitted to accept general residential, commercial, and industrial refuse for disposal. Kiefer Landfill receives over 700,000 tons of waste per year.



Source: Sacramento County GIS (2009), SACOG (2009), Sacramento LAFCO, "Flood Agencies North Sacramento County" (2003), MBA (2009).



Michael Brandman Associates

32330001 • 01/2010 | 3.8-5_Flood_Agencies.mxd



Exhibit 3.8-5 American River Flood Control District Jurisdiction

In the proposed incorporation area, solid waste and green waste collected south of El Camino Avenue are transported directly to the Kiefer Landfill. Residential solid waste, recyclables, and green waste collected north of El Camino Avenue is initially transported to North Area Recovery Station (NARS) before being transported to the Kiefer Landfill. Sacramento County owns and operates the North Area Recovery Station (NARS), which consists of 23 acres located in North Highlands. The NARS facility accepts waste from the general public, businesses, and private waste haulers.

Street Lighting and Street Maintenance

The Sacramento County Municipal Services Agency (MSA) Department of Transportation (Department of Transportation) maintains the street and safety lights in the unincorporated areas of the County. Funding for the services comes from a direct levy on property tax bills for County Service Area 1 (CSA 1). CSA 1 was formed in 1986 to consolidate all street and highway safety lighting services into one countywide district and to provide a financing mechanism for services not financed by property taxes. CSA 1 is a benefit assessment district established to provide highway safety lighting. CSA 1 provides funding for over 36,000 County-maintained and 2,300 SMUD-maintained street and highway safety lights in unincorporated Sacramento County, and in the City of Rancho Cordova.

The Department of Transportation is also responsible for the planning, design, construction, and maintenance for all street and highway improvements in the unincorporated area of Sacramento County. The Department of Transportation has a number of roadway maintenance and improvement projects underway in Arden Arcade. Projects completed and underway include pavement and sidewalk maintenance, neighborhood traffic management program, and road improvement projects, as well as landscape and streetscape improvements. Construction of streets and roads are primarily funded by federal and state gas taxes, funds received through Measure A and SB 325 (sales taxes), the Countywide Roadway and Transit Development Fee Program, special financing and assessment districts, federal and state funding, and certain developer fees.

The County of Sacramento installed and maintains an underground conduit with a fiber-optic communication system that provides communications and operational functions for the Intelligent Transportation Systems (ITS) devices located in the County and operated by the County's Traffic Operations Center.

Land Use and Planning

The Sacramento County has land use authority within the proposed incorporation area. The Sacramento County MSA's Planning and Community Development Department is responsible for planning services and administers such County land use planning programs as:

- Long-range planning services, including updating the Sacramento General Plan

Public Services

- Specific and community planning services, including preparation and adoption of specific and community plans
- Current planning and zoning services, including zoning information and review of private development projects and processing to the various hearing bodies
- Code enforcement, including enforcement of the Zoning Code and abatement of public nuisances such as dangerous, buildings, junk vehicles, and junk and rubbish

Building Inspection and Permitting

Building regulation for all new construction and remodeling for residential, commercial, and industrial uses is provided by the Building Inspection Division of the Sacramento County MSA. The Building Inspection Division provides plan review, building permits, and field inspection services through the downtown and neighborhood offices. The nearest office to the proposed incorporation area is the North Area Service Center at 6015 Watt Avenue in North Highlands. The Building Inspection Division processes approximately 18,000 permits each year. Services are funded through the collection of fees.

Electric, Gas, and Communication

The Sacramento Municipal Utility District (SMUD) provides electric service to most of Sacramento County and a small portion of Placer County. The service area covers more than 900 square miles and includes the proposed incorporation. SMUD provides power through a variety of sources that include hydro-generation; cogeneration; and renewable technologies such as wind solar, and biomass/landfill gas power. In 2009, renewable sources—biomass, geothermal, small hydroelectric, solar, and wind—accounted for 19 percent of electricity generated by SMUD. Other sources include coal-fired power plants (1 percent), large hydroelectric (20 percent), natural gas (60 percent), and nuclear (less than 1 percent).

SMUD also purchase power from the wholesale market and has arrangements with the California Independent System Operator, Western Systems Power Pool, and Northern California Power Pool to purchase and sell short-term power that is based on market conditions. Through this process, SMUD is able to meet load requirements and reduce costs.

Two of SMUD's largest sources of power are the Cosumnes Power Plant and the Upper American River Project (UARP). The Cosumnes Power Plant is a 500-megawatt gas-fired plant that can provide the annual energy needs of 450,000 single-family homes. The UARP provides about 20 percent of demand in normal water years. The UARP consists of 11 reservoirs and eight powerhouses on the American River, generating 1.8 billion kilowatt-hours of electricity that provides power to 180,000 homes.

Pacific Gas and Electric Company (PG&E) is an investor-owned utility that provides electricity and natural gas services to over 5 million customers in California. In Sacramento County, PG&E

provides gas services to urbanized areas such as Arden Arcade, and electricity to the Delta communities south of Walnut Grove.

Telephone service to the area is provided by SureWest Communications or AT&T. SureWest also provides cable TV and internet services, as does Comcast. Cable services are regulated by the Sacramento Cable Television Commission. The proposed city would be eligible for a share of the franchise fees that are now collected by the County.

Mass Transit

Sacramento Regional Transit (Sac RT) District serves the proposed incorporation area with fixed route bus services and paratransit services. Sac RT is governed by an 11-member Board of Directors consisting of members of the Sacramento, Elk Grove, Citrus Heights, Rancho Cordova, and Folsom city councils, as well as members of the Sacramento County Board of Supervisors. The light rail Blue Line operates along the northern boundary along the I-80 corridor. A more detailed discussion of mass transit services can be found in Section 3.9, Transportation and Circulation of this EIR.

Other Special Districts and Agencies

Sacramento Area Council of Governments

The Sacramento Area Council of Governments (SACOG) includes cities and counties in the Sacramento region. The county members include Sacramento, Yolo, Sutter, Yuba, Placer and El Dorado counties and their cities. The agency is primarily responsible for regional transportation planning.

Fair Oaks Cemetery District

The Fair Oaks Cemetery District operates and maintains cemeteries for Fair Oaks and neighboring areas, including Arden Arcade, Carmichael, Fair Oaks, and a portion of Rancho Cordova. The boundaries are Madison Avenue on the north, Jackson Highway on the south, El Dorado County on the east, and the City of Sacramento on the west. The District contains one 11-acre cemetery located at Olive Street and New York Avenue in Fair Oaks.

Sacramento-Yolo Mosquito and Vector Control District

The Sacramento-Yolo Mosquito and Vector Control District provides surveillance of mosquitoes and other vectors to determine the threat of transmitting diseases or annoyance and implements controls to reduce those conditions. A vector is defined as an organism that transmits a pathogen and the magnitude and direction that is represented by the spread or transport of the pathogen. Examples of vectors are ticks and yellow jackets. The Sacramento-Yolo Mosquito and Vector Control District serves all of Sacramento and Yolo counties.

Summary

Table 3.8-6 provides a summary of service providers currently within the proposed incorporation boundary.

3.8.3 - Regulatory Framework

Sacramento County General Plan

The Sacramento County General Plan adopted in 1993 serves as the overall guiding policy document for the unincorporated areas of the County. If the incorporation is approved, the new city would adopt the county general plan and would have up to 30 months to develop its own general plan.

Sacramento LAFCo Policies, Standards, and Procedures

As described in Section 2.0, Project Description, LAFCo has developed standards and guidelines in its Plans, Policies, and Procedures manual that aid in the implementation of the Cortese-Knox-Hertzberg Act. Policies related to incorporations are also provided in Section 1, Introduction, and Section 2, Project Description. The following Sacramento LAFCo policies, standards, and procedures relate to public services and utilities:

Chapter 4, Section G Efficient Services and Orderly Development

The LAFCo has determined that community needs for efficient services and orderly development are generally met most effectively by proposals which:

- 4 Restructure agency boundaries and service areas to provide more logical, effective, and efficient local government services.

Chapter 5, Section D Incorporations and Disincorporations

- 2 LAFCo will approve a proposal for incorporation only if the Commission determines that the applicant has demonstrated a significant unmet need for services or need for improved services within the territory for which incorporation is proposed. In determining whether an unmet need for services or improved services exists, the Commission will base its determination on the following:
 - a. Current levels of service in the area to be incorporated;
 - b. Existing and projected growth rate and density patterns in the area to be annexed;
- 3 The LAFCo shall approve a proposal for incorporation only if it determines that incorporation will result in an entity with the capability to provide the most efficient forms of urban services to the affected population.
- 4 The LAFCo Commission will not approve a proposal for an incorporation unless the incorporation proponents can demonstrate that the proposed city will be able to fund municipal services and remain financially solvent.

Arden Arcade Community Plan

The Arden Arcade Community Plan was adopted by the Board of Supervisors in 1980. The Plan sought to maintain residential areas, control sign blight, regulate the conversion of residential to

commercial use, and encourage the use of mass transit over the single-occupant vehicle. Many of the goals and objectives are incorporated into the County General Plan.

Arden Arcade Community Action Plan

The Community Action Plan was an effort to implement the community plan and to provide better county services to the community. The County conducted surveys and hosted several community meetings including teams of interested residents who would explore policies to address neighborhood involvement, transportation, economic development, public safety, and land use and code enforcement.

To address neighborhood involvement and communication, the County established the Department of Neighborhood Services. Transportation policies were developed to improve the appearance of the community, reduce traffic congestion, and improve safety of pedestrians, bicyclists, and motorists.

The economic development policies that were endorsed by the community focus on the retentions of existing retailers; support for the continued vitality of retail corridors; re-use of vacant/run-down strip malls; and assistance to local businesses in the form of physical improvements such as landscaping, utilities, and drainage. Land Use and Code Enforcement covered a wide range of issues including maintenance of property, parking, rezoning multi-family to single family, providing information on coding compliance, drainage concerns, and reuse of vacant or underutilized property.

SB 215

California adopted SB 215 in early 2009. The bill will become effective in January 2010. The bill modifies a factor that requires the commission to consider the proposal's consistency with city or county general specific plans and any applicable transportation plan, when reviewing a proposal for change of organization or reorganization. Factors to be considered in the review shall include but not be limited to population and population density, proximity to other populated areas, the need for organized community services, the regional transportation plan, and other factors as specified in SB 215.

AB 939

The California Integrated Waste Management Act of 1989 (AB 939) requires each city and the unincorporated portions of each county to reduce landfill waste by 50 percent by 2000. Agencies that do not meet the requirement are subject to fines of \$10,000 per day. The process also requires the development and implementation of a Source Reduction and Recycling Element that identifies how recycling goals will be met. The Source Reduction and Recycling Elements for each jurisdiction become part of the County Integrated Waste Management Plan.

Table 3.8-6: Service Provider Summary

Service	Existing Service Provider	Proposed Service Provider	Comments
Administrative Services	County of Sacramento	City of Arden Arcade	Will include a City Manager.
Animal Control	Sacramento County Animal Care and Regulation Department	City of Arden Arcade. Options: City provides the services, or City contracts with another city or agency for these services.	—
Building Inspection	County of Sacramento	City of Arden Arcade or services may be contracted out by the City.	—
Fire Protection and Paramedics.	Sacramento Metropolitan Fire District. Cal Fire contracts paramedic and ambulance services to American Medical Response (AMR).	City of Arden Arcade will contract with a fire protection agency to provide fire protection and paramedic services.	—
Flood Control Services	Sacramento Area Flood Control Agency (SAFCA), Sacramento County Water Agency (SCWA)	It is expected that SAFCA and SCWA will continue to provide flood control services.	See Mitigation Measure 3.8-9a and 3.8-9b.
Land Use, Planning and Environmental	County of Sacramento	City of Arden Arcade will provide these services or these services may be contracted out by the City.	—
Law Enforcement	County of Sacramento Sheriffs Department, California Highway Patrol	City of Arden Arcade will either establish its own police department or contract with the County of Sacramento Sheriffs Department to provide law enforcement services.	The City, or contracted agency, will be responsible for traffic enforcement on City streets after incorporation. See Mitigation Measure 3.8-2.
Library	Sacramento Public Library Authority	It is expected that the County will continue to provide this service.	—
Mosquito and Vector Control	Sacramento-Yolo Mosquito & Vector Control District	It is expected that the Sacramento-Yolo Mosquito & Vector Control District will continue to provide these services.	—
Parks and Recreation	Sacramento County Regional Parks and Recreation Department, Mission Oaks RPD, Fulton-El Camino RPD, Arden Manor RPD, Arden Park RPD	After incorporation, it is expected that the Special District will continue to provide these services.	—

Table 3.8-6 (cont.): Service Provider Summary

Service	Existing Service Provider	Proposed Service Provider	Comments
Road Maintenance, Engineering, Drainage	County of Sacramento Department of Transportation	City of Arden Arcade will be responsible for these services. Some of these services may be contracted out to either government or private entities.	See Mitigation Measure 3.8-14a and 3.8-14b.
Schools	San Juan Unified School District	It is expected that the school services will remain the same.	After incorporation, it is expected that these school district boundaries will not change.
Sewer Service	Sacramento Area Sewer District and Sacramento Regional County Sanitation District	It is expected that the sewer services will remain the same.	—
Solid Waste Trash Collection and Disposal	County Department of Waste Management and Recycling	It is expected that solid waste trash collection and disposal will continue to be provided by the County.	—
Street and Safety Lighting	County of Sacramento Department of Transportation (County Service Area 1)	City of Arden Arcade will have the choice whether or not to detach from the CSA 1.	See Mitigation Measure 3.8-15.
Transit and Paratransit	Sacramento Regional Transit District	It is expected that transit service will remain the same.	—
Water Service	Sacramento County Water Agency Zone 41, Sacramento Suburban Water District, Del Paso Manor Water District, Golden States Water Company, and Cal American Water Company	It is expected that there will be no change in water service providers.	See Mitigation Measures 3.8-7a and 3.8-7b.
Regional Transportation Planning	Sacramento Area Council of Governments	It is expected that regional transportation planning will remain the same.	—
Other Special Districts	Fair Oaks Cemetery District, Sacramento-Yolo Mosquito and Vector Control District	It is expected that regional vector control, and the local cemetery district will remain the same.	—
Source: Incorporation Petition, Sacramento LAFCo, pers. comm. 2009.			

3.8.4 - Project Impact Analysis

Methodology for Analysis

The environmental analysis provided below is based on potential physical impacts of the project, as well as potential indirect physical impacts associated with economic or social impacts for the project, pursuant to CEQA Guidelines Section 15131. Pursuant to the Cortese-Knox-Hertzberg Local Government Reorganization Act of 2000 and LAFCo policies, an analysis of the incorporation's fiscal effect will be prepared under a separate cover.

Thresholds of Significance

For the purposes of this EIR, to determine whether impacts to public services and utilities are significant environmental effects, the following questions are analyzed and evaluated. Would the incorporation of Arden Arcade:

- Result in substantial adverse physical impacts associated with the provision of new or physically altered government facilities or the need for new or physically altered governmental facilities, the construction of which could cause significant environmental impacts, in order to maintain acceptable service rations, response times or other performance objectives for any of the public services including:
 - fire protection
 - law enforcement
 - schools
 - parks and recreation
 - Other public facilities and services (e.g., library and animal control services)
- Exceed wastewater treatment requirements of the Sacramento Valley Regional Water Quality Board?
- Require or result in the construction of new water or wastewater treatment facilities or expansion of existing facilities, the construction of which would cause significant environmental effects?
- Require or result in the construction of new storm water drainage facilities or expansion of existing facilities, the construction of which could cause significant environmental effects?
- Are sufficient water supplies available to serve the project from existing entitlements and resources, or are new or expanded entitlements needed?
- Has the wastewater treatment provider which serves or may serve the project determined that it has adequate capacity to accommodate the project's projected demand in addition to the provider's existing commitments?
- Is the project served by a landfill with sufficient permitted capacity to accommodate the project's solid waste disposal needs?

- Comply with federal, state, and local statutes and regulations related to solid waste, including greenwaste and recycling requirements?
- Result in the inefficient, wasteful, or unnecessary consumption of energy?

3.8.5 - Impact Statements and Mitigation Discussions

Fire Protection

Impact 3.8-1: The project would not adversely impact fire protection services.

Impact Analysis

Fire protection and emergency services provided by the Sacramento Metropolitan Fire District (Sac Metro Fire) would not be altered as a result of the proposed incorporation. Sac Metro Fire would continue to provide emergency medical, fire, hazmat, advanced life support, and life safety services after incorporation.

Significance Determination Before Mitigation

Less than significant impact.

Mitigation Measures

No mitigation is necessary.

Significance Determination After Mitigation

Less than significant impact.

Law Enforcement

Impact 3.8-2: The project could potentially adversely impact law enforcement services.

Impact Analysis

Upon incorporation, law and traffic enforcement services, currently provided by the Sacramento County Sheriff and California Highway Patrol (CHP), would become a city responsibility.

CHP departmental policy authorizes an Area Office to continue providing traffic enforcement services at no cost to the new city, during the remainder of the fiscal year of incorporation or until establishment of the new police department, whichever occurs first. Generally, CHP services will only be provided for the first 12 months after incorporation. However, in the case where unforeseen circumstances arise preventing the timely formation of a police department, CHP will consider providing services for limited duration, provided the new city makes a formal request that includes provisions for reimbursement for services.

The project applicants are proposing that the new city assume responsibility for law and traffic enforcement through the creation of a local department or on a contractual basis with the Sacramento County Sheriff or a private entity. Accordingly, mitigation is proposed requiring the new city to provide adequate law and traffic enforcement services as a condition of incorporation approval. The

new city would have the ability to contract and/or develop adequate law and traffic enforcement services and funding mechanisms. Therefore, implementation of the proposed mitigation would ensure that impacts would be less than significant.

Significance Determination Before Mitigation

Potentially significant impact.

Mitigation Measures

MM 3.8-2 LAFCo shall condition the incorporation approval to require that the city provide adequate law and traffic enforcement services through the creation of a local department or on a contractual basis with the Sacramento County Sheriff, and CHP, or another law enforcement agency and other entities if legally permissible.

Significance Determination After Mitigation

Less than significant impact.

Schools

Impact 3.8-3: The project would not adversely impact public school services.

Impact Analysis

The proposed incorporation area includes 11 elementary schools, two middle schools, three high schools, one special education high school, and two special education school programs. These existing public school facilities adequately serve the current population. School services would not be altered as a result of the project. Since the proposed incorporated area is more than 98 percent built out, and the remaining 2 percent of vacant land is not concentrated within the boundary of a particular school's attendance area, it is not likely that additional development would be significant enough to adversely impact existing schools or create the need for new schools. Therefore, the incorporation of the city would have a less than significant impact on existing school facilities and would not require the construction of new facilities. Impacts would be less than significant.

Significance Determination Before Mitigation

Less than significant impact.

Mitigation Measures

No mitigation is required.

Significance Determination After Mitigation

Less than significant impact.

Parks and Recreation

Impact 3.8-4: The project would not adversely impact parks and recreation services.

Impact Analysis

The proposed incorporation area currently contains adequate park and recreation facilities. Facilities within the proposed incorporation area are overseen by four separate Sacramento County Regional Park and Recreation Districts, including Mission Oaks, Fulton El Camino, Arden Manor, and Arden Park. The proposed incorporation boundary would lie alongside an approximately 0.75 mile stretch of the American River Parkway's northern boundary. Services and maintenances provided by the existing and adjacent districts would not be altered as a result of the proposed incorporation. As discussed in Section 3.7, Population and Housing, Impact 3.7-1, the project would not induce substantial population growth. Since the project would not demolish or construct any park facilities and would not induce substantial population growth (thereby requiring additional park and recreation facilities); furthermore, future service demand increases within the new city would be mitigated by local property taxes and other funding sources, as determined necessary. Resulting in a less than significant impacts to parks and recreation services.

Significance Determination Before Mitigation

Less than significant impact.

Mitigation Measures

No mitigation is required.

Significance Determination After Mitigation

Less than significant impact.

Library Services

Impact 3.8-5: The project would not adversely impact library services.

Impact Analysis

Public library services provided by the Sacramento Public Library Authority would not be altered as a result of the project. The proposed incorporation area currently includes two branch libraries. The costs and current level of services would not change. No changes in funding provisions are proposed to occur as a result of the incorporation, and the new city would be required to adopt County ordinances regarding library services for at least 120 days. The project would not demolish or construct any library facilities and would not directly induce population growth, thereby requiring additional library facilities. Accordingly, impacts to library services would be less than significant.

Significance Determination Before Mitigation

Less than significant impact.

Mitigation Measures

No mitigation is required.

Significance Determination After Mitigation

Less than significant impact.

Animal Control

Impact 3.8-6: The project would not adversely impact animal control services.

Impact Analysis

The project applicants are proposing that the new city assume responsibility for animal control services through the creation of a local department or on a contractual basis with Sacramento County or a private entity. Accordingly, mitigation is proposed requiring the new city to provide animal control services at existing service levels as a condition of incorporation approval. The new city would have the ability to contract and/or develop adequate animal control services and funding mechanisms. Therefore, implementation of the proposed mitigation would ensure that impacts would be less than significant.

Significance Determination Before Mitigation

Potentially significant impact.

Mitigation Measures

MM 3.8-6 LAFCo shall condition the incorporation approval to require that the new city provide animal control services through the creation of a local department or on a contractual basis with other entities if legally permissible. At a minimum, animal control services shall be maintained at levels existing at the time of approval of the project EIR.

Significance Determination After Mitigation

Less than significant impact.

Water Supply

Impact 3.8-7: The project would have sufficient water supplies available to serve the project from existing entitlements and resources, but it may adversely affect the provision of water supply.

Impact Analysis

Municipal water services within the proposed incorporation area are currently provided by Sacramento County Water Agency Zone 41, Sacramento Suburban Water District, Del Paso Manor Water District, Golden States Water Company, and Cal American Water Company. As noted in environmental setting, there are minor amounts of parcels that are unserved but that use private wells. The project does not include changes to the existing municipal water services and would not require additional water supplies.

Future development of the incorporation area could result in an increased demand for water supply beyond what is anticipated under the Sacramento County General Plan. The new city could be in the position of competing with surrounding unincorporated areas and other cities within the County for water supply sources. However, it should be noted substantial increase in water supply demand and groundwater depletion is not expected to occur from growth resulting from the limited vacant parcels and growth potential within the incorporation area.

Furthermore, SCWA has expressed concern that the new city could adopt policies that would cause operating expenses to increase significantly, resulting in higher customer rates for service. SCWA has also expressed concern about protecting the sustainability of Sacramento's groundwater sub-basins. As discussed in Section 3.4, Hydrology and Water Quality, the Arden Arcade area overlies the South American subbasin aquifer. SCWA participates in the Sacramento Groundwater Authority (SGA), which is responsible for a groundwater management program to maintain the sustainable yield of the North Area sub-basin. In order to ensure that the new city would continue to provide adequate water services and protect the sustainability of groundwater, mitigation is proposed that would require the new city to identify existing water purveyors as primary providers and to become a signatory of the Water Forum Agreement. Implementation of the proposed mitigation measures would ensure impacts to water supply and services would be less than significant.

Significance Determination Before Mitigation

Potentially significant impact.

Mitigation Measures

- MM 3.8-7a** LAFCo shall condition the approval of the incorporation to identify the current public agencies that provide water as primary service providers such that if it is determined that one of the primary provider districts were no longer able to render services, the city would become the primary service provider for that district.

- MM 3.8-7b** LAFCo shall condition the approval of the incorporation such that the city becomes a signatory to the Water Forum Agreement.

Significance Determination After Mitigation

Less than significant impact.

Wastewater

Impact 3.8-8: **The project would not exceed wastewater treatment requirements and would not require or result in the construction of new water or wastewater treatment facilities or the expansion of existing facilities.**

Impact Analysis

The proposed incorporation area is located within the Sacramento Regional County Sanitation District (SRCSD) and Sacramento Area Sewer District (SASD) collection area. Wastewater is treated

at the Sacramento Regional Wastewater Treatment Plant (SRWTP). Existing wastewater conveyance and treatment services are provided at an adequate level. Upon incorporation of the new city, wastewater services would continue to be provided by SRCSD, SASD, and SRWTP. Incorporation of the proposed city would not create any new sources of wastewater and, therefore, would not exceed wastewater treatment requirements or require or result in the construction of new wastewater treatment facilities. Accordingly, impacts to wastewater facilities and services would be less than significant.

Significance Determination Before Mitigation

Less than significant impact.

Mitigation Measures

No mitigation is required.

Significance Determination After Mitigation

Less than significant impact.

Stormwater Drainage Facilities

Impact 3.8-9: The project would not require or result in the construction of new stormwater drainage facilities or the expansion of existing facilities, the construction of which could cause significant environmental effects.

Impact Analysis

The incorporation of Arden Arcade proposes no changes to drainage services provided by SCWA and Sacramento Stormwater Utility. Furthermore, the incorporation would not require the construction or expansion of new or existing stormwater drainage facilities.

Since existing drainage facilities cross the proposed city-county boundaries, it would be impractical to have different standards of construction, operation, and maintenance on the same storm drain system. Consistency is important to reduce the risks of flooding. Since cities have the authority to set standards for construction, operation, and maintenance, mitigation is proposed that would require the new city to coordinate with SCWA to maintain consistency.

Sacramento County Department of Water Resources expressed concern that the new city should adopt a floodplain management ordinance. The new city would be required to adopt the County's floodplain management ordinance for at least 120 days after incorporation or until new ordinances are created.

Implementation of the following mitigation would ensure that stormwater drainage facilities and services would continue at the existing level upon incorporation and ensure impacts are reduced to less than significant.

Significance Determination Before Mitigation

Potentially significant impact.

Mitigation Measures

- MM 3.8-9a** LAFCo shall condition the incorporation approval to require the new city to develop standards for construction, operation, and maintenance regarding the maintenance of Zone 11B and 13 that are compatible with SCWA therefore continuing services from the Sacramento County Stormwater Utility.
- MM 3.8-9b** LAFCo shall condition the incorporation approval to require the new city to adopt a flood plain management ordinance.
- MM 3.8-9c** LAFCo shall condition the incorporation approval to require the new city to participate and eventually become a co-permittee under the existing countywide NPDES permit.

Significance Determination After Mitigation

Less than significant impact.

Landfill Capacity

Impact 3.8-10: The project would be served by a landfill with sufficient permitted capacity to accommodate the project's solid waste disposal needs.

Impact Analysis

Sacramento County Waste Management & Recycling Division is responsible for maintaining a waste management system for residents and business in the unincorporated areas of Sacramento County. The Kiefer Landfill and the North Area Recovery Station provide sufficient disposal facilities for the proposed incorporation area (Sacramento County Waste Management & Recycling, 2009). Implementation of the proposed incorporation would not increase the amount of trash produced and, therefore, would not require addition solid waste disposal needs. No impact would occur.

Significance Determination Before Mitigation

No impact.

Mitigation Measures

No mitigation is necessary.

Significance Determination After Mitigation

No impact.

Solid Waste

Impact 3.8-11: The project would comply with federal, state, and local statutes and regulations related to solid waste.

Impact Analysis

Upon incorporation, it is assumed that the new city would contract with Sacramento County in order to continue existing solid waste collection services. Because there is a level of uncertainty about this assumption and because Sacramento County has indicated concern over the continuation of its services in the Arden Arcade area after incorporation, mitigation is proposed that would require the new city to contract waste collection services through the County of Sacramento. The continuation of established services would ensure that the city complies with AB 939, which requires a minimum of 50 percent recycling and wastestream reduction.

Significance Determination Before Mitigation

Potentially significant impact.

Mitigation Measures

MM 3.8-11 LAFCo shall condition the incorporation approval to require the new city to contract waste collection services through the County of Sacramento's Department of Waste Management and Recycling Services or competent private hauler to maintain current service levels, at a minimum.

Significance Determination After Mitigation

Less than significant impact.

Energy, Gas, and Communication Facilities

Impact 3.8-12: The project would not result in the inefficient, wasteful, or unnecessary consumption of energy, gas, and or communication facilities.

Impact Analysis

Currently SMUD, PG&E, AT&T, and Comcast provide services to a majority of the proposed incorporation area. Future urban development projects would be required to enter into service and distribution facility extension agreements with the service providers. None of the service providers have identified any concerns regarding the proposed incorporation. Additionally, the new city would not require the use of energy beyond existing energy uses within the proposed incorporation area. Accordingly, no impacts would occur.

Significance Determination Before Mitigation

No impact.

Mitigation Measures

No mitigation is required.

Significance Determination After Mitigation

No impact.

Building Inspection and Permitting/ Land Use and Planning

Impact 3.8-13: **The project would result in the new city assuming responsibility for building inspection, engineering, permitting, and planning services, potentially altering current service provisions.**

Impact Analysis

The City of Arden Arcade Incorporation Petition states the desire to make decisions locally with regard to planning, zoning, and land use. This implies the new city will assume responsibility for building inspection, engineering, and planning services. This may be accomplished by the establishment of a city department, by contracting with another local agency, or by contracting with a private consultant. The new city would be required to adopt the County General Plan and all ordinances for at least 120 days and may adopt new development standards, which would require compliance with CEQA. The new city would be required to comply with federal and state laws regarding building and planning activities.

Significance Determination Before Mitigation

No impact.

Mitigation Measures

No mitigation is required.

Significance Determination After Mitigation

No impact.

Road, Street, and Landscape Construction and Maintenance

Impact 3.8-14: **The project would result in road, street, and landscape construction and maintenance services becoming a city responsibility, potentially altering current service standards.**

Impact Analysis

With the incorporation of City of Arden Arcade, responsibility for road, street, and median landscape maintenance will be transferred to the new city. These types of services can be provided by a city department, contract with a local agency, or contract with a private entity. However, no changes to current service levels are specifically proposed.

There are sections of Watt Avenue (Auburn Boulevard to Longview Drive), Auburn Boulevard (Park Road to Howe Avenue), Winding Way (Auburn Boulevard to 1000 feet east), and Bell Street (between the easterly and westerly legs of Auburn Boulevard) that lie on the boundary between the City of Sacramento and the new city. The Sacramento County Department of Transportation requests that the responsibility for maintenance be transferred to the new city. Measure A funds will be

available to the new city for eligible roadway construction and maintenance activities. Eligible roadway maintenance and roadway construction activities are defined in the Measure A Transportation Expenditure Agreement. Because of the requirements of generating an annual Measure A expenditure plan and establishing an accounting system to track the use of Measure A funds, and because of the adoption of transportation impact fees, it is not likely the new city would receive a Measure A allocation until its second year.

Significance Determination Before Mitigation

Potentially significant impact.

Mitigation Measures

MM 3.8-14a LAFCo shall condition the incorporation approval to require that existing transportation fee impact programs be continued at level necessary to adequately fund approved road construction projects.

MM 3.8-14b LAFCo shall condition the incorporation approval to require the transfer of ownership, maintenance, and financial responsibility for Watt Avenue (Auburn Boulevard to Longview Drive), Auburn Boulevard (Park Road to Howe Avenue), Winding Way (Auburn Boulevard to 1000 feet east), and Bell Street (between the easterly and westerly legs of Auburn Boulevard) to the new city.

Significance Determination After Mitigation

Less than significant impact.

Street Lighting

Impact 3.8-15: The project would result in street lighting services becoming a city responsibility, potentially altering current service standards.

Impact Analysis

County Service Area 1 (CSA 1) provides funding for the maintenance, operation, and electrical cost of street and safety lights within the proposed incorporation area. Upon incorporation, the new city would be automatically detached from CSA 1. The new city would ultimately be responsible for providing streetlight and roadway maintenance through a city department, by contract with the County, or by contract with a private entity. Alternatively, the new city could waive detachment from CSA 1, which would require creating a new benefit zone within CSA 1 and assume the responsibility for funding the difference between revenues collected within that zone and funds necessary to provide services. It is unknown at this time how the new city would coordinate with adjacent jurisdictions regarding roadway facilities or how programmed improvements would be undertaken.

Significance Determination Before Mitigation

Potentially significant impact.

Mitigation Measures

MM 3.8-15 LAFCo shall condition the incorporation approval to require that the new city shall provide street lighting maintenance by (1) contract with the County or contract with a private company, (2)waive detachment from CSA 1 and agree to be financially responsible for any difference in revenues collected by CSA 1 and the cost of services, or (3)directly perform the maintenance. At a minimum, street lighting and roadway conditions shall be maintained at existing levels, and close coordination between city and county staff will be required.

Significance Determination After Mitigation

Less than significant impact.

Other Special Districts

Impact 3.8-16: **The project would potentially fragment or disrupt current regional planning activities.**

Impact Analysis

The project applicants propose no changes regarding coordination with other districts providing services to the region (such as SACOG, Sacramento Regional Transportation District, Fair Oaks Cemetery Districts, and Sacramento-Yolo Mosquito and Vector Control District). Sacramento County and SACOG have expressed concerns that the new city should participate in regional planning activities such as regional transportation and air quality issues. At this time, it cannot be determined if the potential impact would be beneficial, detrimental, or without effect. However, since the new city would share the same air basin and roadway system utilized by other neighboring jurisdictions, potential conflicts with regional planning efforts may occur if the new city were not to participate.

Other than fare revenues, Sac RT derives its income from three primary sources: federal and state governments funding, developer fees, and local sales tax. Should Arden Arcade incorporate and decide to operate transit service independently of Sac RT, the new city could apply for certification to receive a portion of the state and federal funds that are now allocated to Sac RT. A newly incorporated city would not automatically be eligible to receive Measure A funds directly. However, if Measure A is renewed by voters, it is possible that the new measure would allow the new city to receive sales tax revenues independently for transit service. In the interest of providing integrated transit service that connects the residents of Arden Arcade to destinations throughout the Sacramento area, it would not be desirable for the new city to attempt to operate an independent transit system.

Significance Determination Before Mitigation

Potentially significant impact.

Mitigation Measures

MM 3.8-16a LAFCo shall condition the incorporation approval to require that the new city shall petition SACOG for inclusion in its Joint Powers Agreement as a member city.

MM 3.8-16b LAFCo shall condition the incorporation approval to require that the new city shall petition Sac RT for inclusion in its Board of Directors as a member city, or to enter into an agreement to provide transit services within the new city's incorporated boundary.

Significance Determination After Mitigation

Less than significant impact.