

PROJECT DESCRIPTION
PROPOSED SACRAMENTO METRO FIRE DISTRICT
SPHERE OF INFLUENCE AMENDMENT
NATOMAS FIRE PROTECTION DISTRICT (LAFC #01-14)

The Sacramento Metro Fire District Board of Directors adopted Resolution 2013-117 directing SMFD staff to take the measures necessary to initiate LAFCo proceedings for a Sphere of Influence Amendment to include the entire service area of the Natomas Fire Protection District (NFPD) located in northwestern Sacramento County.

The NFPD is a dependent special district governed by the Sacramento County Board of Supervisors. All services are currently provided by the City of Sacramento, via contract with the County. The NFPD is bounded on the west by the Sacramento River, on the north by the Sacramento/Sutter County line, on the south and east by the City of Sacramento and on the northerly east by the Rio Linda-Elverta Community near the Union Pacific railroad Tracks. This area contains both urban and agricultural lands. The urban development is located within the southern portion of the District boundaries, adjacent to the City of Sacramento, as well as residential development along the Sacramento River.

Surrounding Area

The areas north and west of the District are primarily agricultural and are located in Yolo and Sutter counties. On the southern border, the City of Sacramento is currently developing the North Natomas community. On the east, the community of Rio Linda- Elverta is developing under the Sacramento County General Plan. This area is semi-rural and new areas are being planned by Sacramento County with more suburban development consisting of low and medium density developments and community commercial land uses.

Adjacent Fire Districts

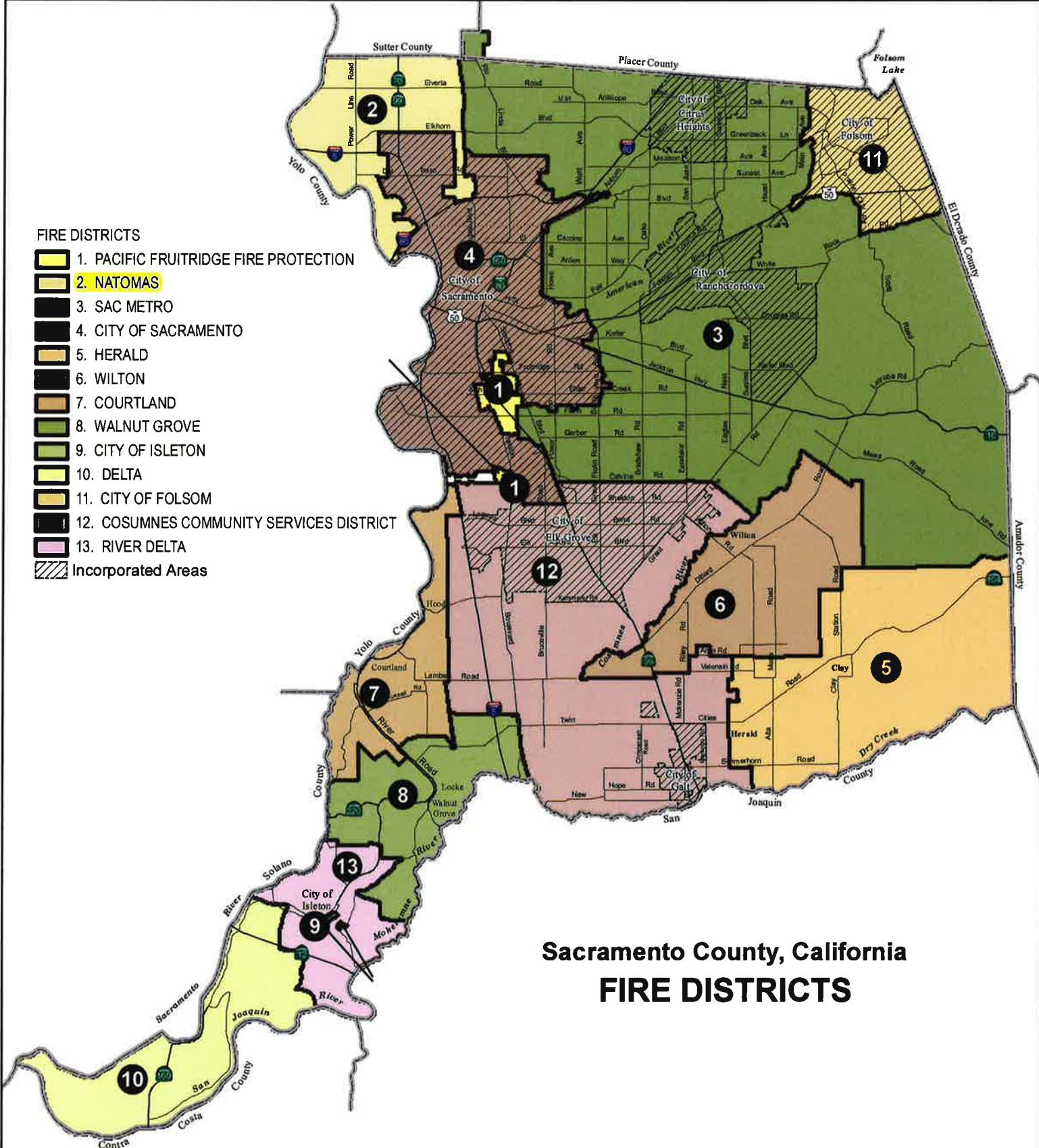
The Sacramento Metropolitan Fire District provides fire and emergency medical service to the area along the eastern boundary of the District. The City of Sacramento Fire Department provides service to both the district and the City of Sacramento. Historically, when areas are annexed to the City of Sacramento, the territory is detached from the fire district and the City of Sacramento Fire Department becomes the service provider.

Land Use and Planning

This area is predominately agricultural. Some residential development has occurred along the Garden Highway as well as agricultural uses with related single-family residential land uses. Sacramento International Airport (SMF) (comprised of land holdings of approximately 6,000 acres) is within the territory – although the air-side of the terminals is served by the Airport fire department. Metro Air Park, (an approved 2,000 acre industrial, commercial, office, and open space project) abuts SMF. The Northgate I-80 Business Park (840 acres) is an existing developed area.

Within the “Panhandle” – a 595 acre vacant area south of Elkhorn Blvd is substantially surrounded by the City – the East Natomas Education Complex is partially constructed. The Panhandle was proposed for annexation to the City until the landowner group was unable to complete the proceedings.

East of El Centro Road within the “Boot”, the City initiated a Sphere of Influence Amendment (Resolution 2006-859) on 403 acres. Forward progress stopped when the property fell out of contract with Centex Homes – the project proponent. The project area includes the 12-acre Tomato Patch (Welcam 80) commercial development, the 49'er Truck Stop, Leona Circle Residential neighborhood, and vacant lands that were once proposed for residential uses. Policies for guiding development in this area are contained in both the City of Sacramento North Natomas Community Plan and the Sacramento County General Plan.



**Sacramento County, California
FIRE DISTRICTS**

FIRE DISTRICTS

- 1. PACIFIC FRUITRIDGE FIRE PROTECTION
- 2. NATOMAS
- 3. SAC METRO
- 4. CITY OF SACRAMENTO
- 5. HERALD
- 6. WILTON
- 7. COURTLAND
- 8. WALNUT GROVE
- 9. CITY OF ISLETON
- 10. DELTA
- 11. CITY OF FOLSOM
- 12. COSUMNES COMMUNITY SERVICES DISTRICT
- 13. RIVER DELTA
- Incorporated Areas

