



SACRAMENTO LOCAL AGENCY FORMATION COMMISSION  
1112 I Street, Suite 100 • Sacramento, CA 95814 • (916) 874-6458 • Fax (916) 874-2939

# **Sacramento LAFCo**

**Agriculture - Open Space Preservation  
Policy Workshop**

**November 1, 2006**



# Workshop Overview

- **LAFCo Authority to Establish Policy**
- **LAFCo statutes Agriculture - Open Space Preservation**
- **Proposed LAFCo Policy**
- **Presentations**
- **Public Comment**

# Sacramento LAFCo Mission

To coordinate logical and timely changes in local governmental boundaries (§56001.) The Commission promotes provision of efficient and economical services while encouraging the protection of agricultural and open space lands (§56001, §56300).

# LAFCo Authority to Establish Policies

**The Commission shall develop and determine the Sphere of Influence of each local governmental agency within the County and enact policies designed to promote the logical and orderly development of areas within the Sphere.**

# The Commission shall have all of the following powers and duties:

- a) To review and approve or disapprove with or without amendment, wholly, partially or conditionally, proposals for changes of organization or reorganization consistent with written policies, procedures, and guidelines adopted by the Commission.
- g) To adopt written procedures for the evaluation of proposals, including written definitions not inconsistent with existing state law, the Commission may adopt standards... (Sec. 56375)

# Cortese-Knox-Hertzberg Reorganization Act of 2000

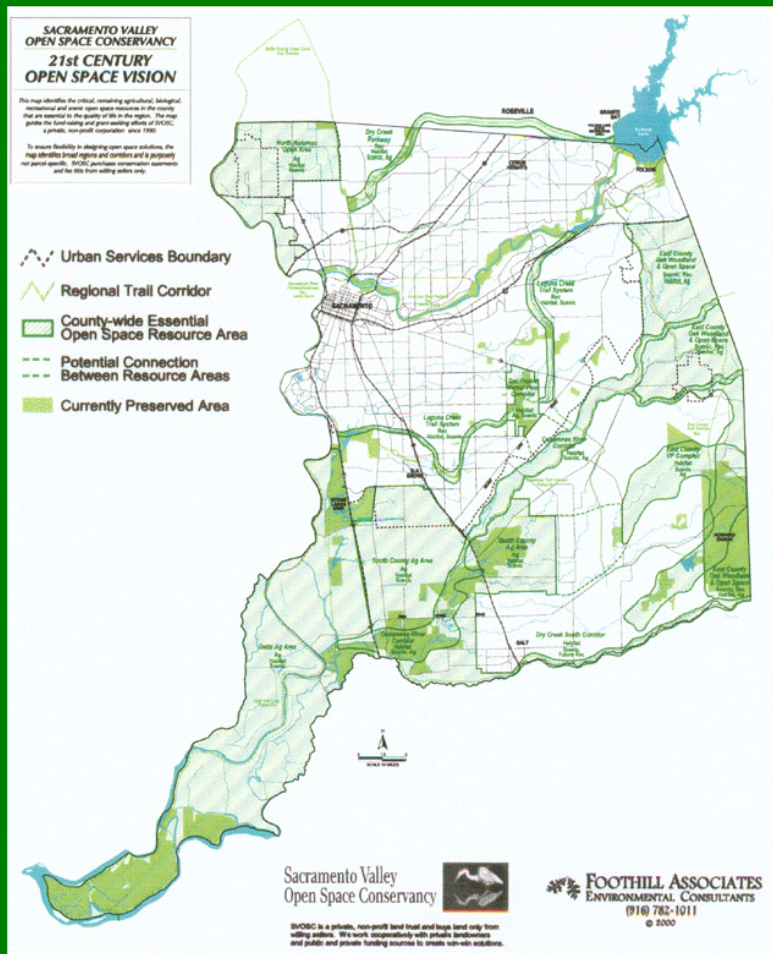
- "Open space" means any parcel or area of land or water which is substantially unimproved and devoted to an open-space use, as defined in Section 65560.

# A Definition of Open Space

**For the purposes of land use planning the State defines Open Space in the Government Code under Section 65560 et. seq. For the General Plan the following applies:**

- **Open space for the preservation of natural resources.**
- **Open space used for the managed production of resources**
- **Open space for outdoor recreation**
- **Open space for public health and safety**

# Ag/Open Space Impacts: Economic, Social, and Cultural



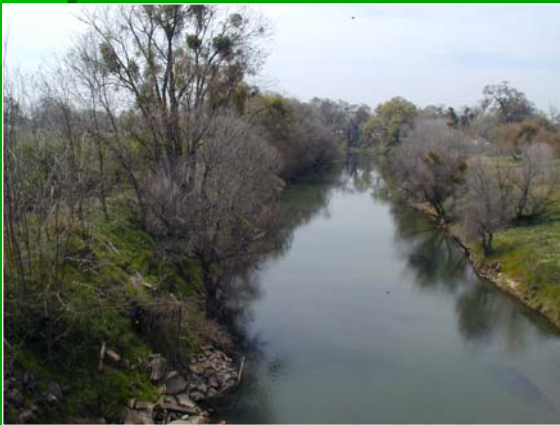
- **Defines and Shapes the County**
  - Over 990 Square Miles
  - 7 Cities
  - 100+ Special Districts
  
- **Preservation enhances quality of life**



# Continuing Growth Pressure



- **Depresses Community's Image**
- **Hinders the Economy**
- **Squanders natural resources**



# Collaborative action for Ag/Open Space preservation



- Well Planned Development
- Enhance View Sheds
- Sustain Agricultural Heritage
- Improve Air Quality

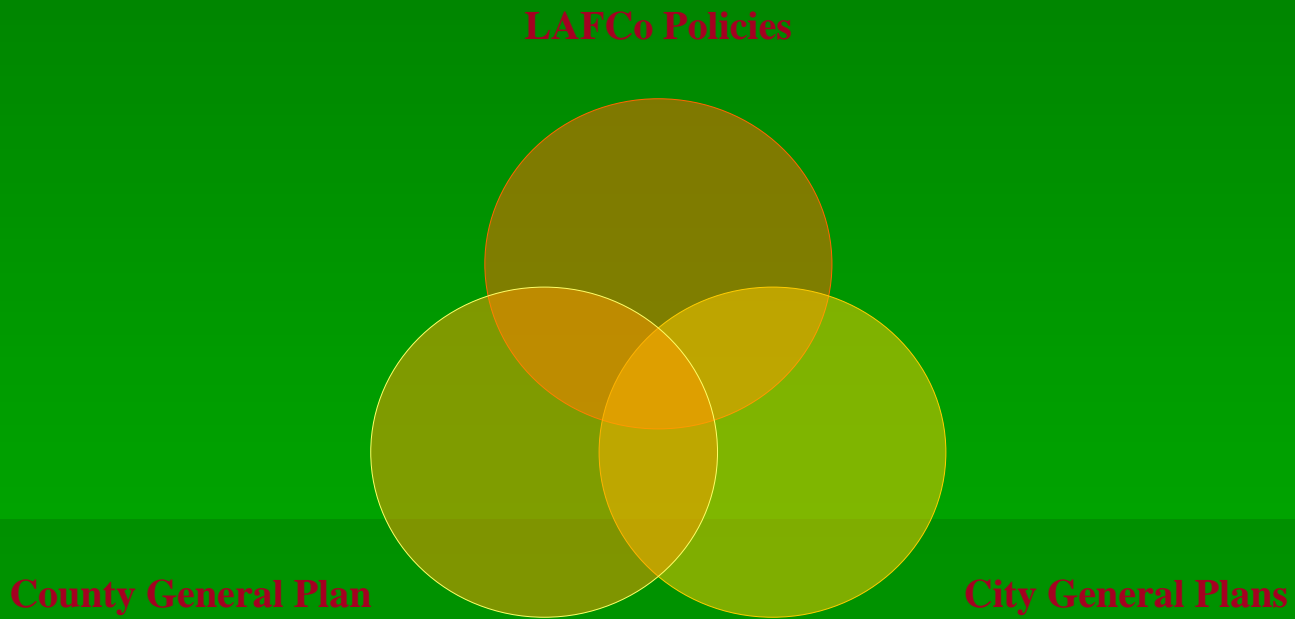


# General Plan Elements

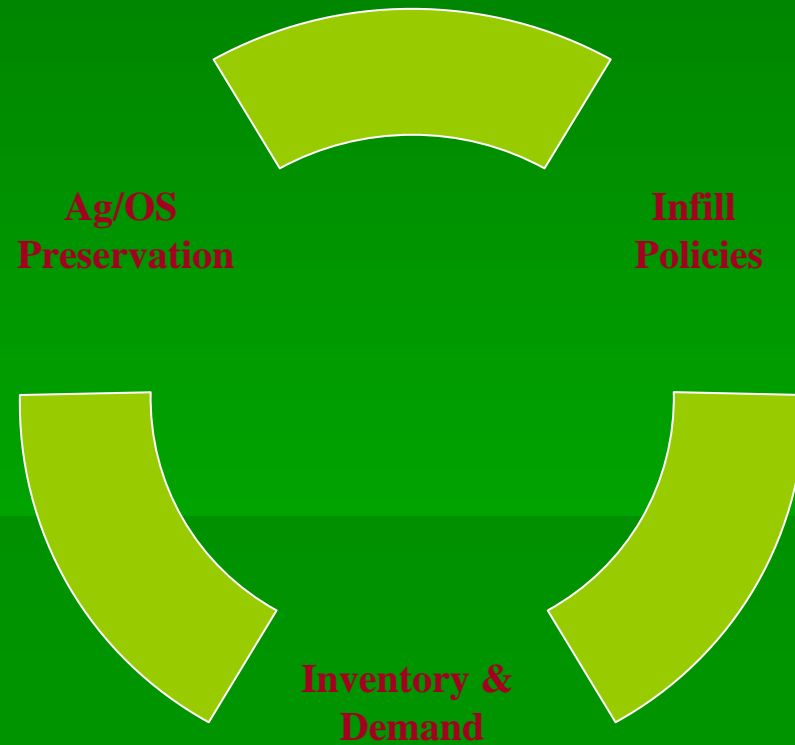
- Land use
- Circulation
- Housing
- Conservation
- Open-space



# Convergence of Open Space Policies



# LAFCo Open Space Policy



# Collaboration: A cross section of Interests



*Including:*

- **Agriculture**
- **Development**
- **Elected Officials**
- **Community Organizations**
- **Advocacy Groups**



# LAFCo Open Space Policy

- **Builds** on and expands existing efforts
- **Provides** a focal point for connecting General Plan Polices
- **Emphasizes** positive benefits for the entire region
- **Creates** a forum for Countywide discussion
- **Leverages** greater resources through coordinated efforts



# Open Space Interests Active in the Sacramento Region



RESOURCES AGENCY  
Department of Fish and Game  
Conserving California's Wildlife Since 1870

California  
Native  
Plant  
Society



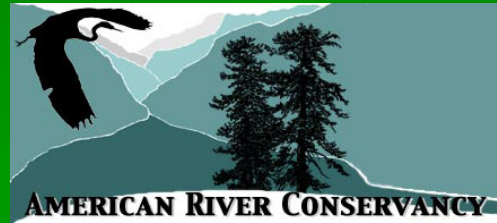
the  
NATOMAS  
BASIN  
conservancy



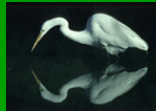
GREEN VALLEY ALLIANCE

El Dorado, Placer, Sacramento, Sutter, Yolo and Yuba Counties

A project of the Valley Vision/Regional Action Partnership



The  
Nature  
Conservancy®  
Saving the Last Great Places



Sacramento Valley  
Open Space Conservancy



EXPLORE, ENJOY AND PROTECT THE PLANET

California Rangeland Trust



Wildlands, Inc.