

Update on Blueprint Implementation

August 6, 2014

Sacramento LAFCo



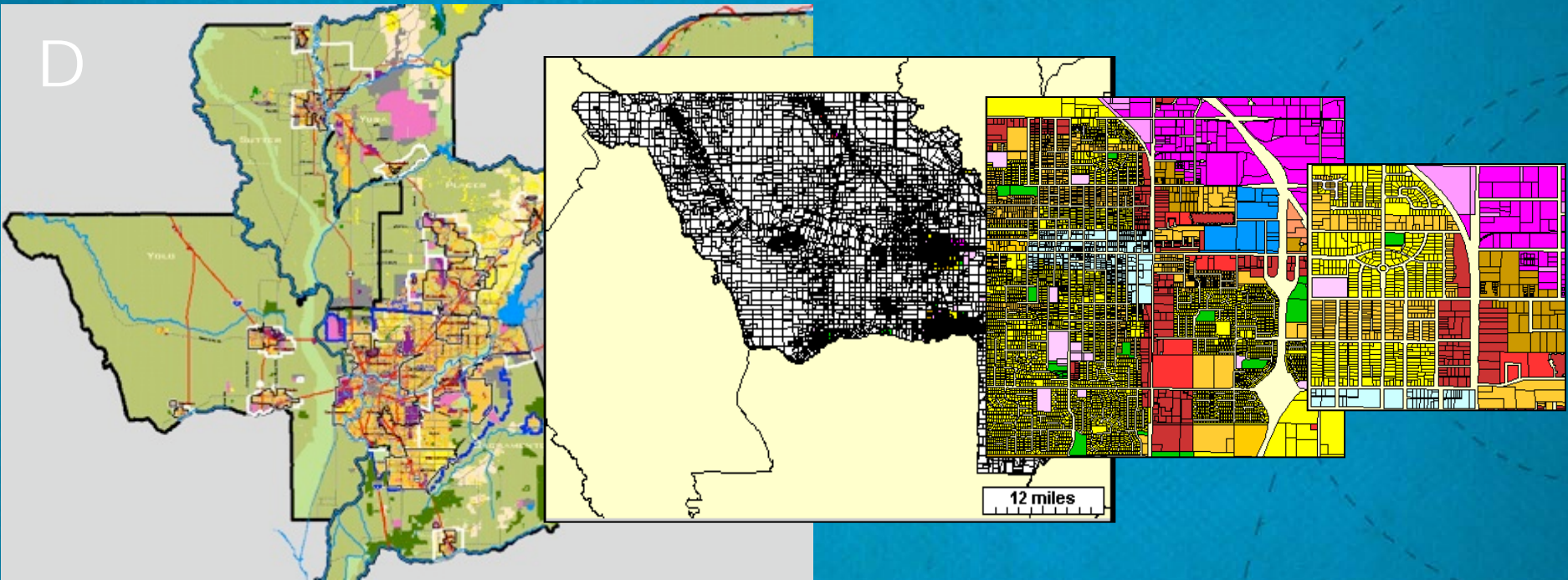
- LAFCo Blueprint Link:

- Ensure the orderly formation of local governmental agencies
- Preserve agricultural and open space lands
- Discourage sprawl

Blueprint Process: Key Elements

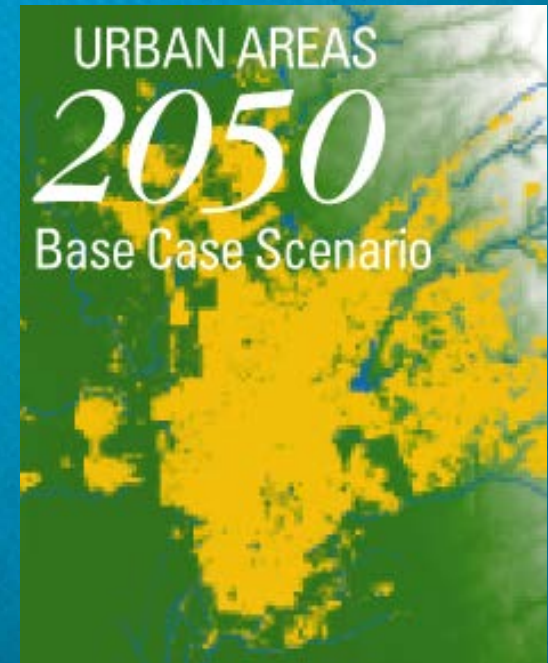
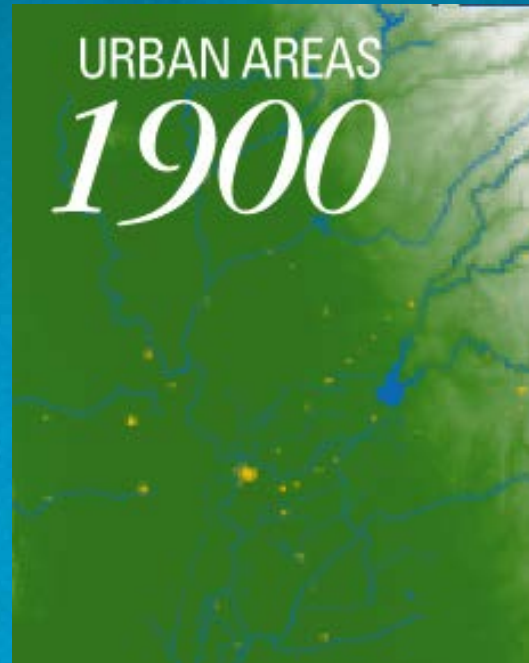
- Focus on implementation/action
- Information-based planning: use state-of-the-art data, forecasts and models
- Citizen democracy: educate, involve and listen to broad range of citizens and stakeholders

Blueprint: Information-based planning



Regional → Jurisdiction → Neighborhood

Urbanization: 1900–2050?



Broad Public Outreach

- Valley Vision led
- 8,000 Participants & Broad Representation Across the Region
- Neighborhood, County and Regional Scale Workshops



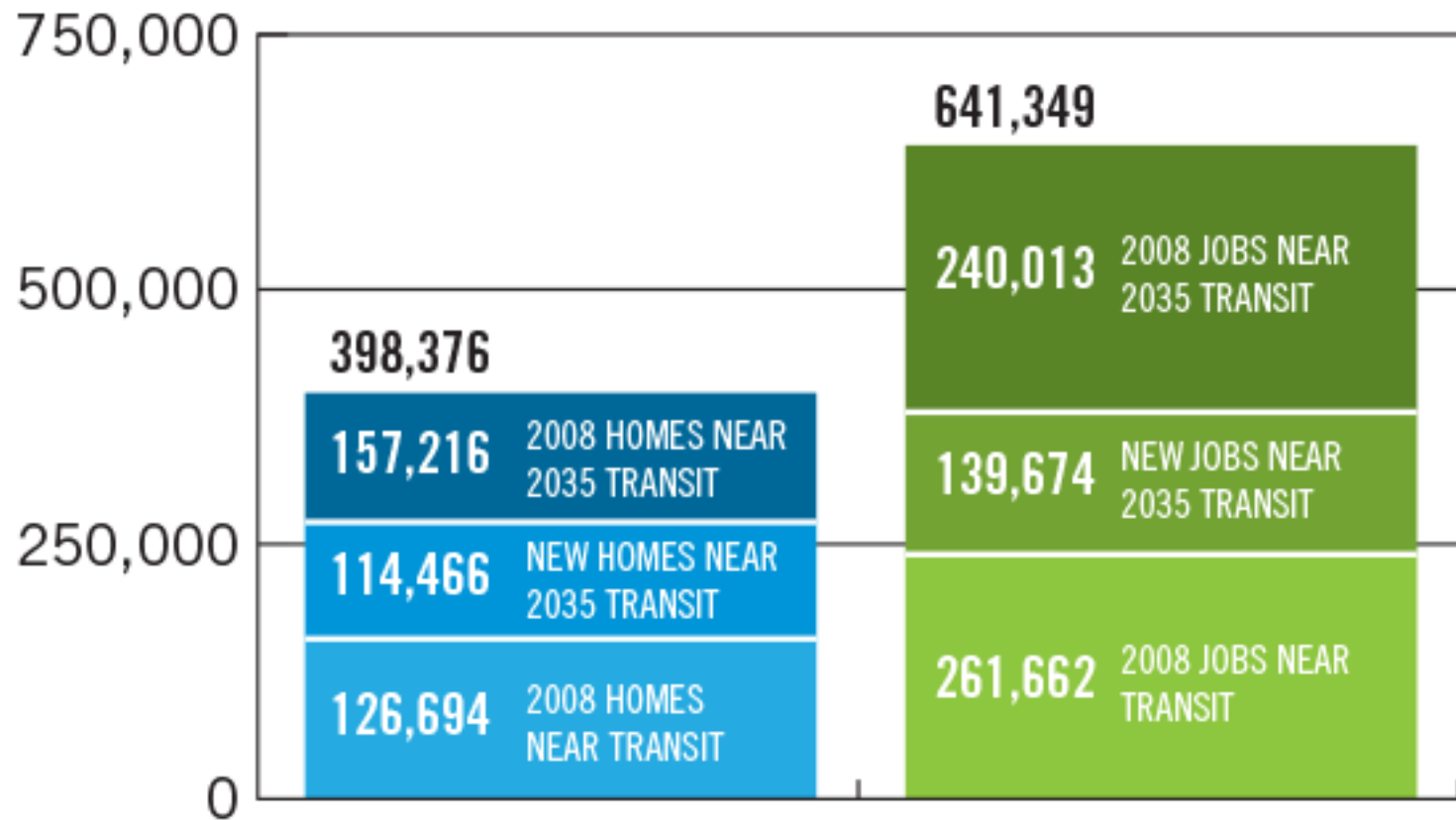
Regional Forum 2004 — 1400 people



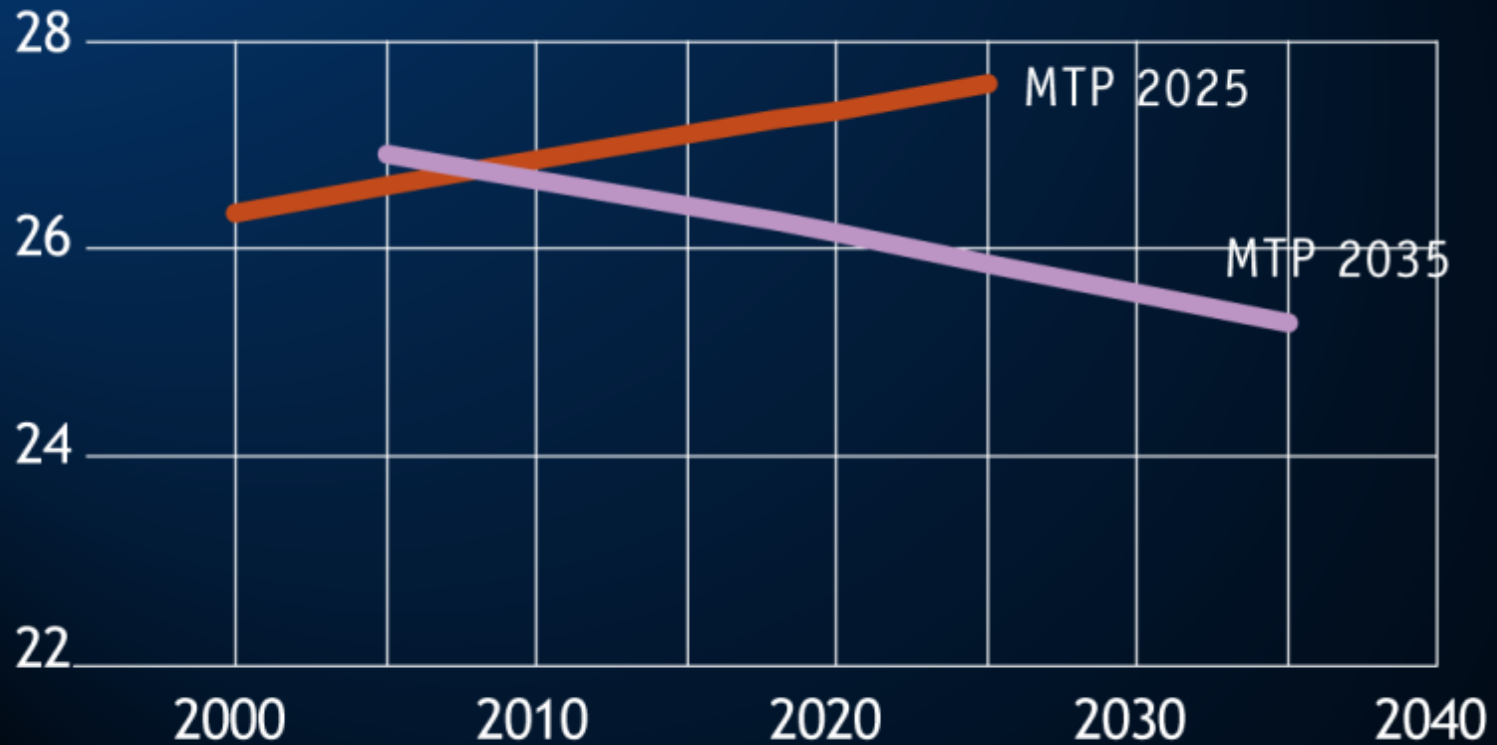
Blueprint Principles

- Transportation Choices
- Housing Choices
- Compact Development
- Use Existing Assets
- Mix Land Uses
- High Quality Design
- Protect Natural Resources

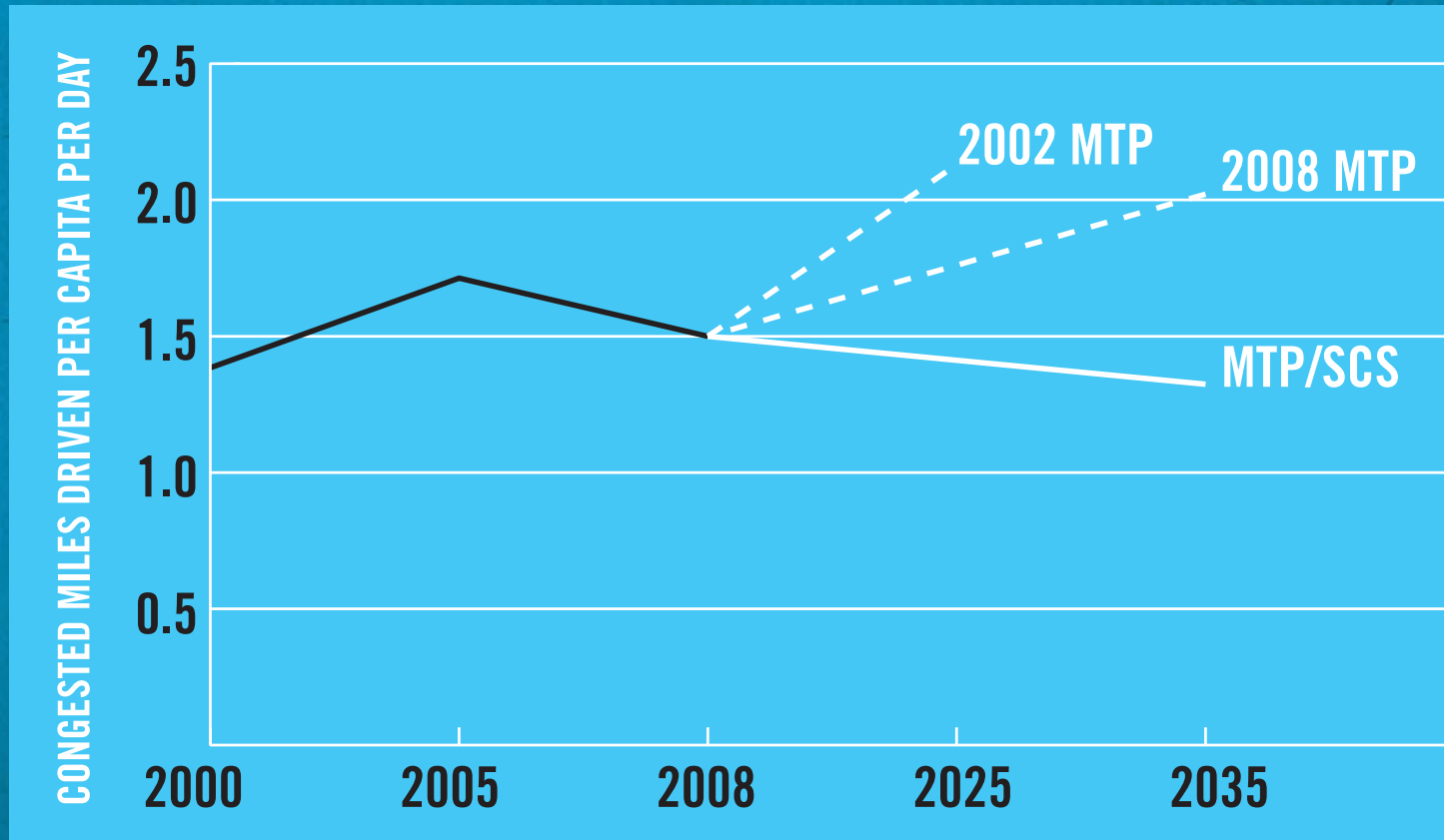
Share of new homes and jobs near high-frequency transit



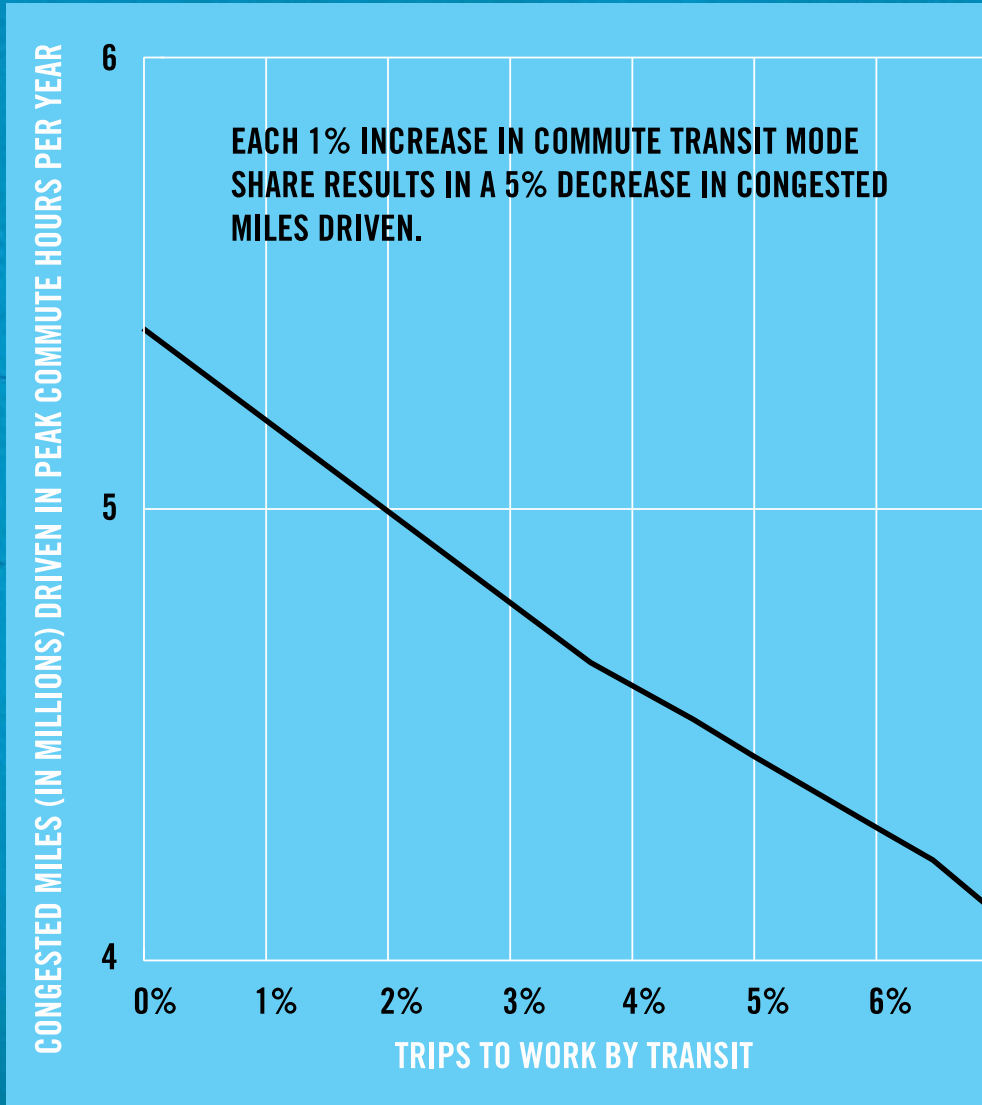
Total Weekday Vehicle Miles Traveled Per Capita



An absolute reduction in the amount of heavy congestion typical residents will experience in their daily lives.



Small increases in transit use help reduce congestion



Reduced impacts on farmland. For every 1,000 new residents:

1988–2005

333

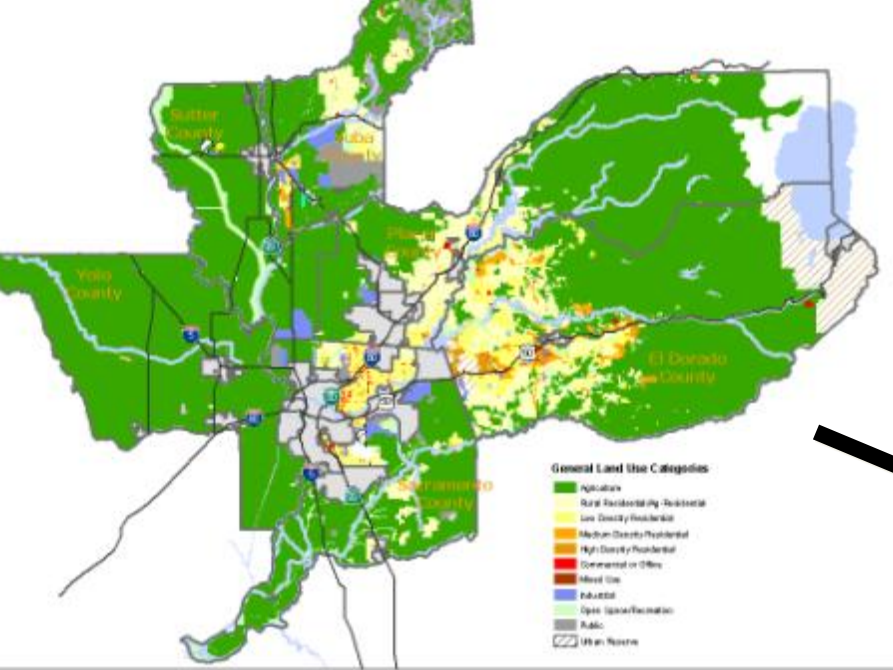
acres

2005–2035

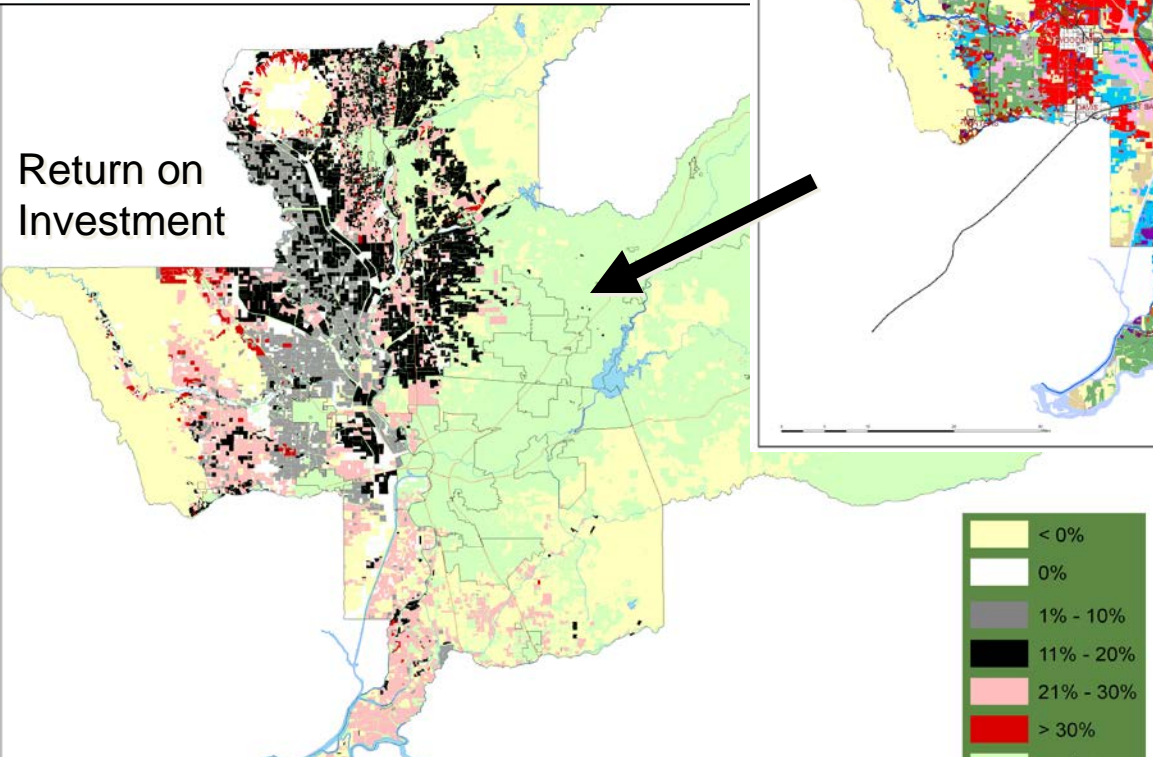
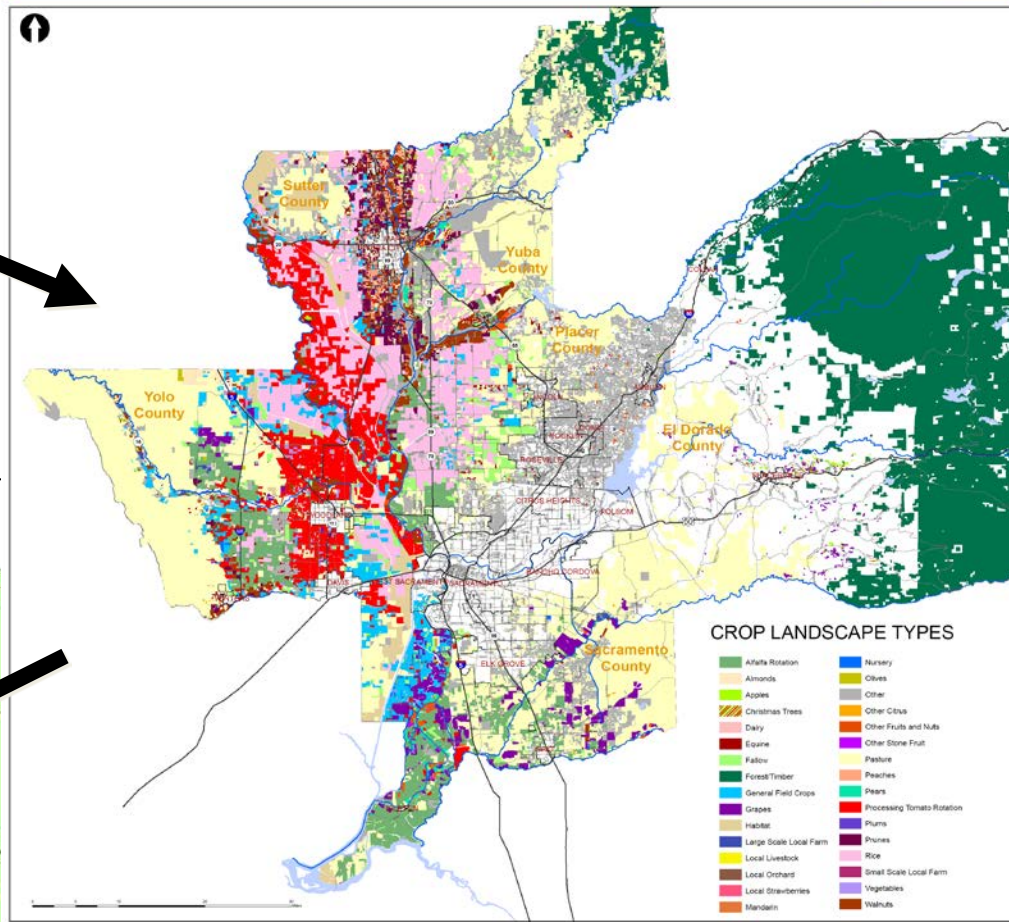
42

acres



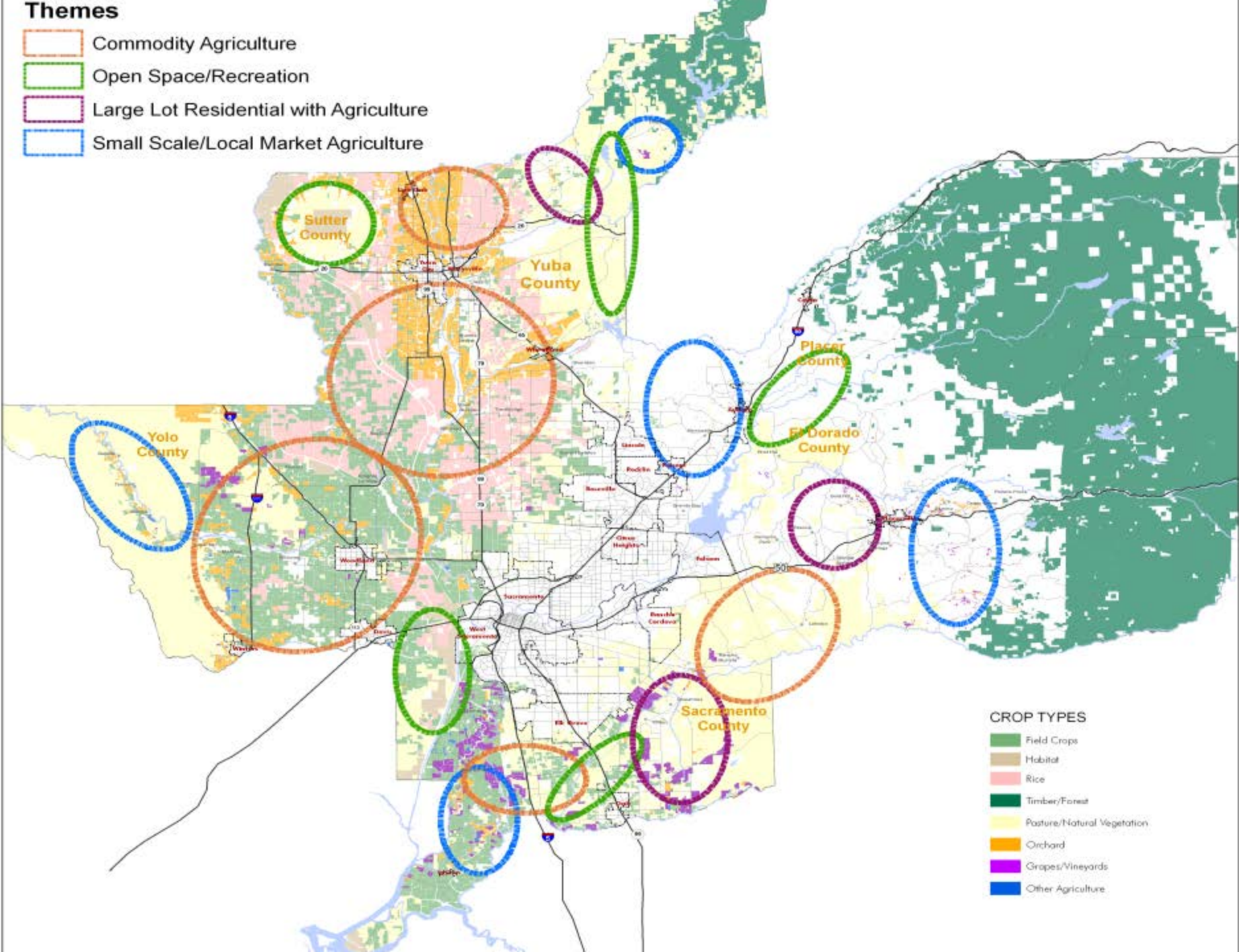


Regional Crop Inventory



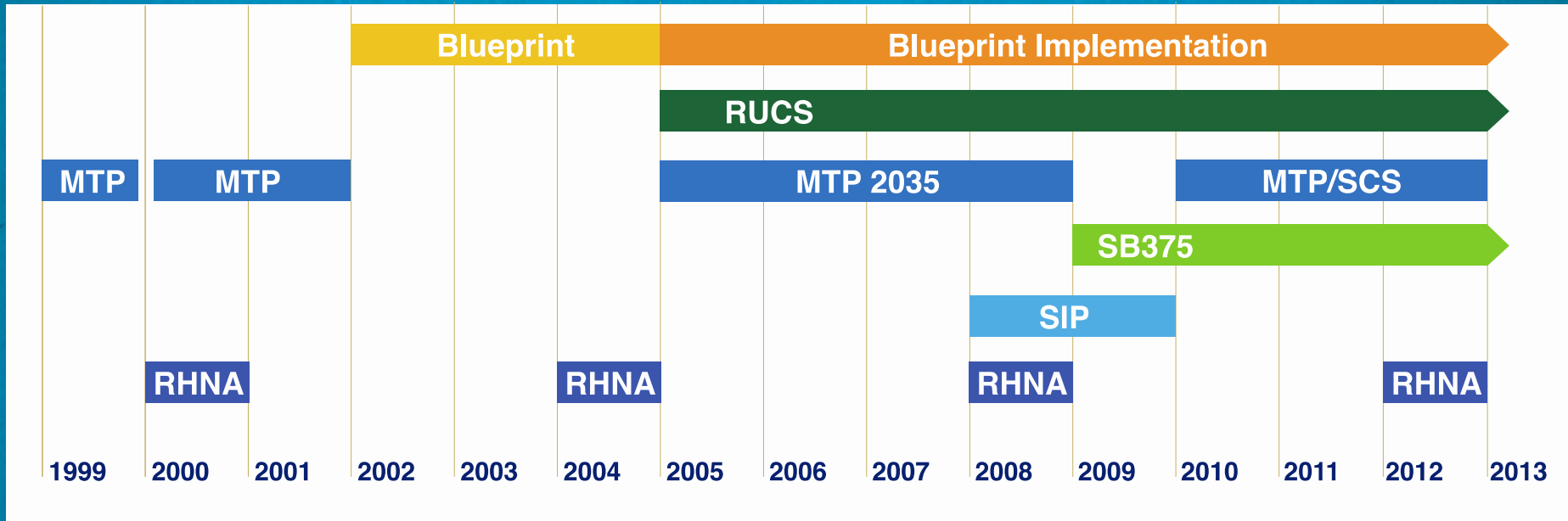
Themes

- Commodity Agriculture
- Open Space/Recreation
- Large Lot Residential with Agriculture
- Small Scale/Local Market Agriculture



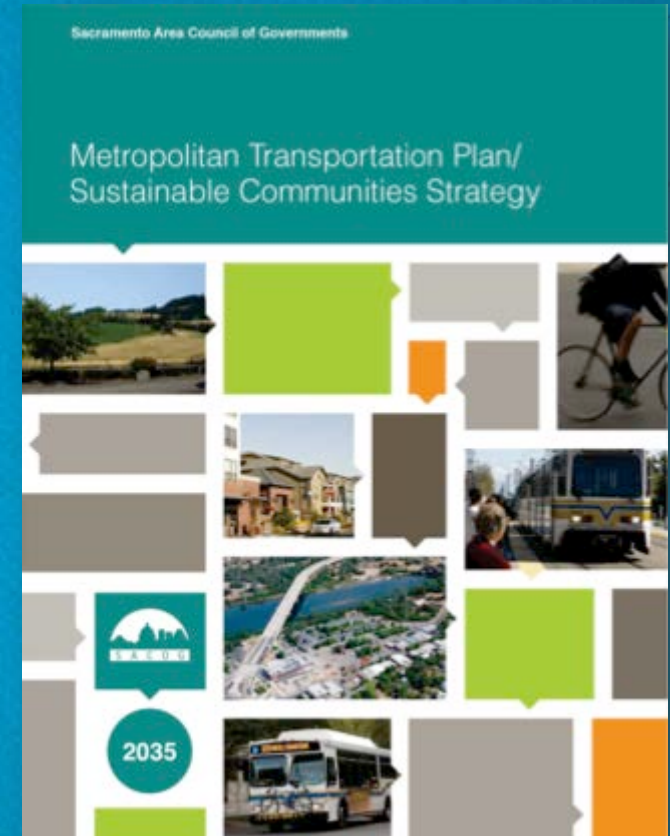
- ### CROP TYPES
- Field Crops
 - Habitat
 - Rice
 - Timber/Forest
 - Pasture/Natural Vegetation
 - Orchard
 - Grapes/Vineyards
 - Other Agriculture

SACOG Major Planning Initiatives



2035 MTP/SCS Highlights (adopted 2012)

- Do more with less
- Per capita VMT, GHG, and heavy congestion declines
- Sweet spot for transit, Finally!
- Rural Urban Connections Strategy
- Research commitments to further improve future plans



Focus of Next MTP/SCS (adopt in 2016)

- Implementation
- Fix it first
- Timing Land Use & Transportation Investments

